



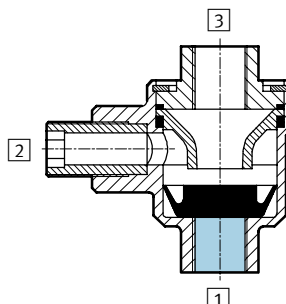
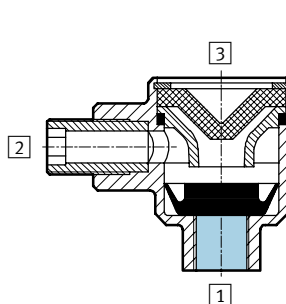
- Pneumatic connection
G¹/₈ ... G¹/₂
- Standard nominal flow rate
300 ... 6,480 l/min
- Versions with or without
silencer



Quick-exhaust valves SE/SEU

Key features, product range overview and type code

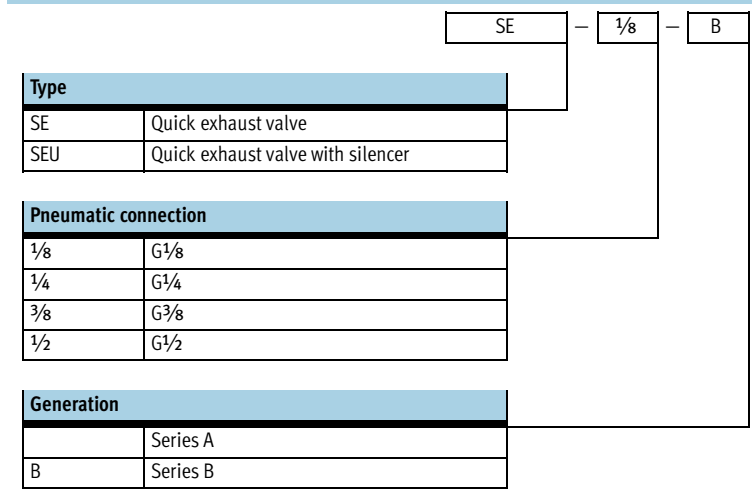


Features

<p>Function</p> <p>These components allow higher piston speeds to be achieved on the return stroke of single and double-acting cylinders. Compressed air flows from the pilot valve and via the quick exhaust valve to the cylinder. The exhaust port 3 is closed at this time. When the pressure at 1 falls, exhaust flow occurs from 2 to 3.</p>	<p>In order to achieve the full benefit of the quick exhaust function, the valve must be connected directly to the port of the cylinder.</p> <p>In the quick exhaust valve SEU the exhaust noise is reduced by a silencer.</p>	<div style="display: flex; justify-content: space-around;"> <div style="text-align: center;">  <p>SE</p> </div> <div style="text-align: center;">  <p>SEU</p> </div> </div>
---	--	--

Product range overview				
Function	Design	Type	Pneumatic connection	→ Page
Quick exhaust valves	Without silencer			
		SE	G1/8	2 / 5.3-3
			G1/4	
			G3/8	
			G1/2	
	With silencer			
		SEU	G1/8	2 / 5.3-5
			G1/4	
G3/8				
G1/2				

Type codes



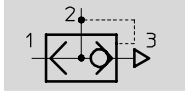
Flow, non-return and regulating valves
Quick-exhaust valves

Quick-exhaust valves SE


Technical data

FESTO

Function



Without silencer

-  - Flow rate
660 ... 6,480 l/min



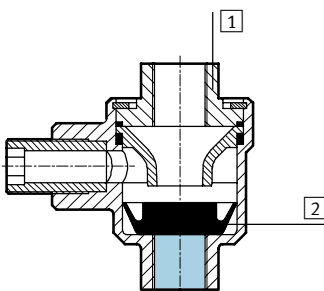
SE-1/8-B

General technical data						
Pneumatic connection	G1/8	G1/4	G3/8	G1/2		
Valve function	Quick exhaust					
Type of mounting	Can be screwed in					
Mounting position	Any					
Nominal size	[mm]	5	7	11	15	
Standard nominal flow rate	1 → 2	[l/min]	300	960	2,880	4,560
Standard nominal flow rate	2 → 3	[l/min]	660	1,200	2,760	6,480
Product weight	[g]	75	100	125	200	

Operating and environmental conditions				
Pneumatic connection	G1/8	G1/4	G3/8	G1/2
Operating medium	Filtered compressed air, lubricated or unlubricated			
Operating pressure	[bar]	0.5 ... 10		
Ambient temperature	[°C]	-20 ... +75		
Temperature of medium	[°C]	-20 ... +75		

Materials

Sectional view

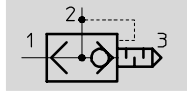


Quick exhaust valve	Pneumatic connection	
1 Housing	G1/8, G1/4	Die-cast zinc
	G3/8, G1/2	Die-cast aluminium
2 Seals		Nitrile rubber


Quick-exhaust valves SEU

Technical data

Function



With silencer

-  - Flow rate
550 ... 4,020 l/min

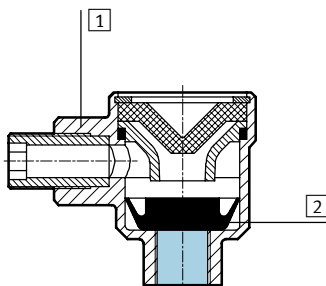


General technical data					
Pneumatic connection		G1/8	G1/4	G3/8	G1/2
Valve function		Quick exhaust			
Type of mounting		Can be screwed in			
Mounting position		Any			
Nominal size [mm]		5	7	11	15
Standard nominal flow rate	1 → 2 [l/min]	300	960	2,880	4,560
Standard nominal flow rate	2 → 3 [l/min]	550	1,100	2,280	4,020
Product weight [g]		65	120	160	320
Noise level [dB (A)]		85			

Operating and environmental conditions					
Pneumatic connection		G1/8	G1/4	G3/8	G1/2
Operating medium		Filtered compressed air, lubricated or unlubricated			
Operating pressure [bar]		0,5 ... 10			
Ambient temperature [°C]		-20 ... +75			
Temperature of medium [°C]		-20 ... +75			

Materials

Sectional view



Quick exhaust valve	Pneumatic connection	
1 Housing	G1/8, G1/4	Die-cast zinc
	G3/8, G1/2	Die-cast aluminium
2 Seals		Nitrile rubber

Quick-exhaust valves SEU

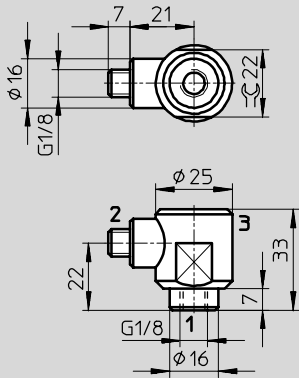
Technical data



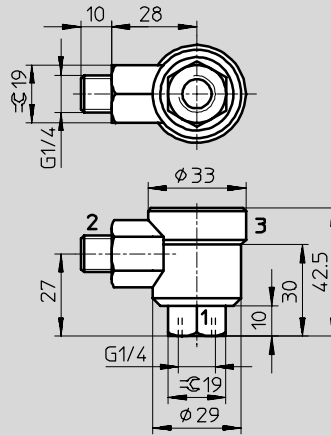
Dimensions

Download CAD data → www.festo.com/en/engineering

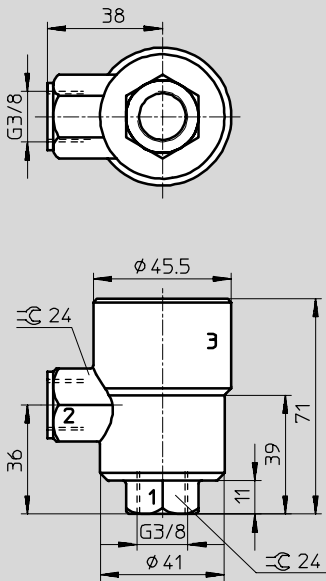
Pneumatic connection G1/8



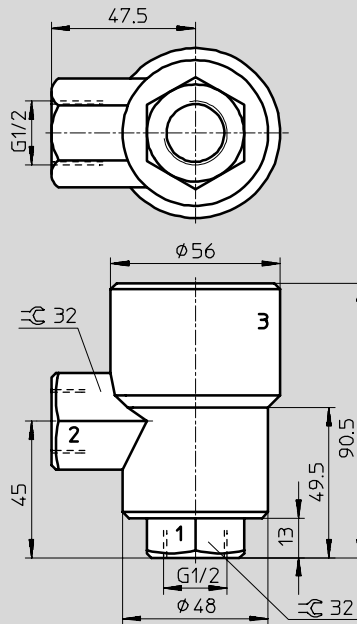
Pneumatic connection G1/4



Pneumatic connection G3/8



Pneumatic connection G1/2



1 = Compressed air connection

2 = Outlet line

3 = Exhaust

Ordering data

Design	Pneumatic connection	Part No.	Type
	G1/8	4616	SEU-1/8
	G1/4	6753	SEU-1/4
	G3/8	6755	SEU-3/8
	G1/2	6822	SEU-1/2

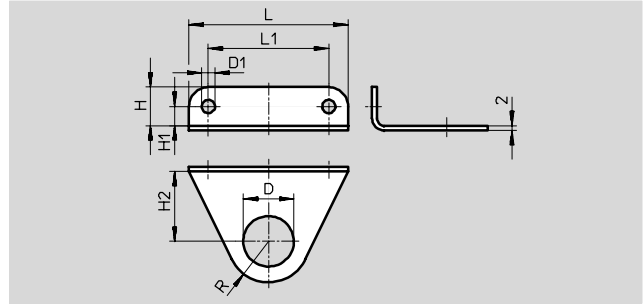
Quick-exhaust valves SE/SEU

Accessories





Mounting bracket HSE

Material:
Anodised aluminium



Dimensions and ordering data											
For connecting thread	D ∅	D1 ∅	H	H1	H2	L	L1	R	Weight [g]	Part No.	Type
G $\frac{1}{8}$	10	4.5	11	6	13.5	40	30	10	5.1	8 710	HSE- $\frac{1}{8}$
G $\frac{1}{4}$	13.2	4.5	11	6	17	42	32	14	6.4	8 711	HSE- $\frac{1}{4}$
G $\frac{3}{8}$	16.8	5.5	13	7	23.5	54	42	13	9	8 712	HSE- $\frac{3}{8}$
G $\frac{1}{2}$	21	5.5	16	8	29	66	50	17	14	8 713	HSE- $\frac{1}{2}$

Ordering data		Part No.	Type
Push-in/threaded fittings QS			
		→	Volume 3
Silencers			
		→	Volume 3