

- Individual
- Wide range of variants
- Versatile
- Sturdy

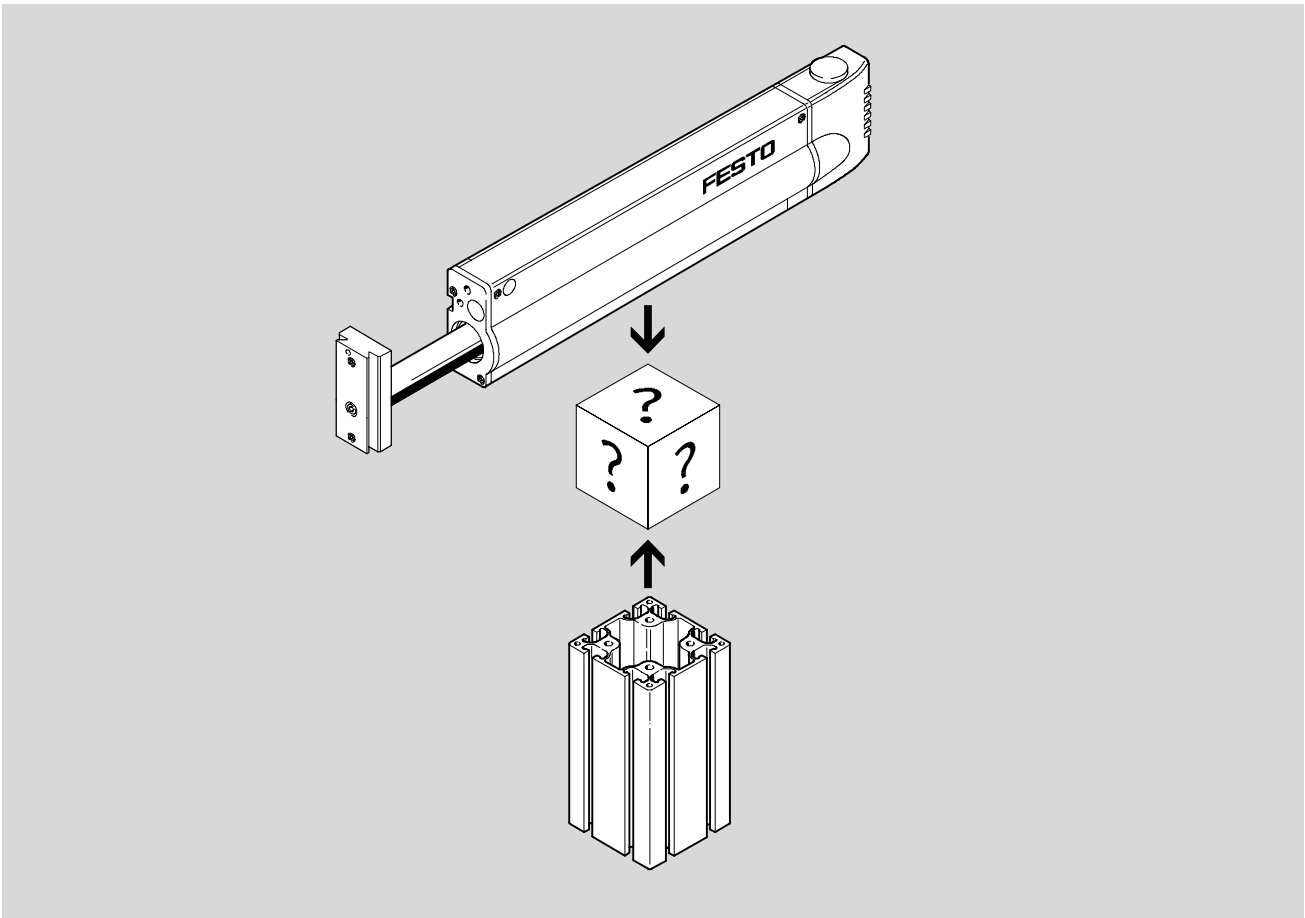
Profile/drive combinations

Key features



System components
Basic components

3.1



Our offer

- Mounting Festo drives on profile columns
- The small parts required to attach the drive are included in the scope of delivery or can be ordered individually as required

Versatile

- A wide range of mounting options is available thanks to the ability to combine kits
- A fixed assembly, integrated mobility in various axes and fine adjustment allow you the freedom to configure the ideal system

Wide range of variants

- Assembly according to individual requirements:
 - Connecting kits
 - Adapter kits
 - Precision adjustment kits

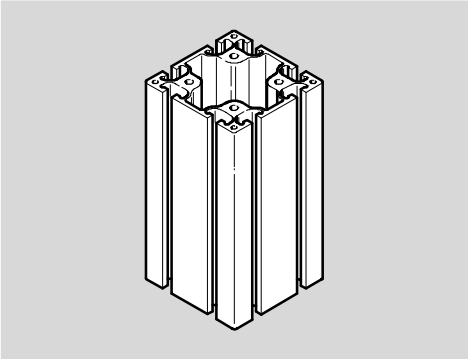
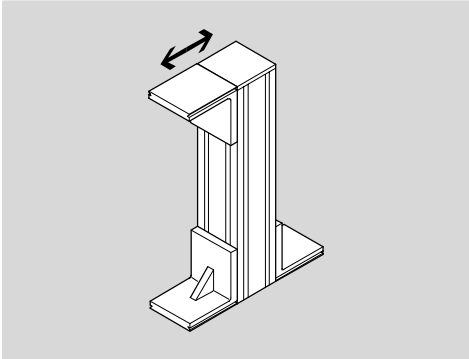
Individual

The kits facilitate practical connections allowing you to successfully realise your applications
Selection aid → 5 / 3.1-10

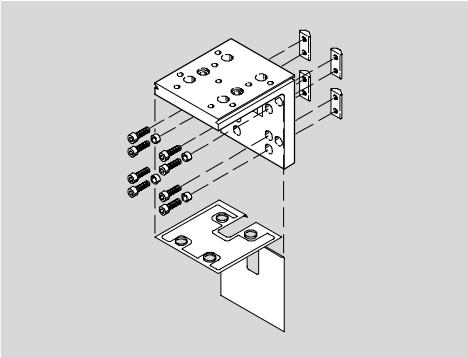
Profile/drive combinations

Key features

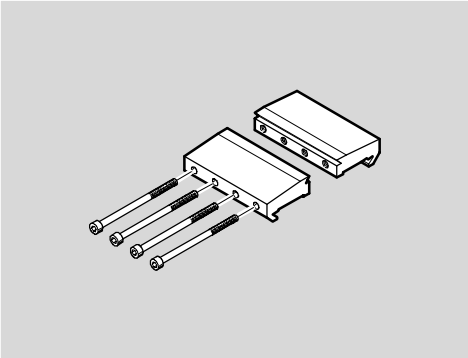
The kit

Overview	Profile column	Profile column configuration/direction of movement
<p>A profile column with the dimensions 80x80 mm and a 40 mm slot width forms the basis of the system. Appropriate configurations of profile columns for the associated directions of movement are possible, based on the size and stroke lengths of the drives.</p>		

Attachment

Connecting kits	Angle bracket
<p>The basic element required to attach a drive to a profile column is an angle bracket. This can be combined with a component kit or a precision adjustment kit.</p>	

Adapter kits

Adapter kits	Parallel dovetail mounting
<p>The drive can be secured directly to the angle bracket using slot nuts or a dovetail mounting.</p>	

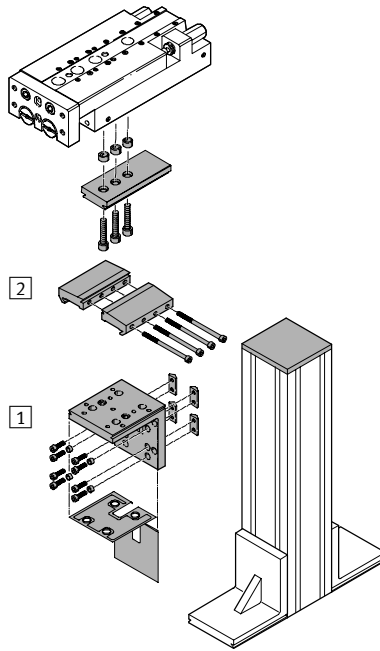
System components
Basic components
3.1

Profile/drive combinations

Selection aid

Faster system building

Select the appropriate profile column mounting



	1 Connecting kit			2 Connecting kit		
	HMBV-ND-HD	HMBV-ND-DL	HMBV-ND	HMBK-DB	HMBK-ND	HMBK-WS
Linear module HMP	-	-	■	■	■	■
Linear module HMPL	-	-	■	■	-	■
Mini slide SLT	-	-	■	-	-	■
Linear drive DGPL	-	■	-	-	-	-
Linear drive DGPL-...-HD...	■	-	-	-	-	-
Technical data →	5 / 3.1-17	5 / 3.1-16	5 / 3.1-13	5 / 3.1-14	5 / 3.1-14	5 / 3.1-15

Profile/drive combinations

Selection aid



Faster system building

Recommended combinations with linear module HMP or HMPL

The tables present a selection of recommended profile column configurations and the required components.

They list the appropriate configurations for profile columns based on the size and stroke length of the drives.

Profile column configuration/ direction of movement	Quantity	Part No.	Type	Linear module HMP Stroke [mm]			
				16	20	25	32
	1	175 958	HMBS-80/80-...	50	50	–	–
	1	175 965	HMBSA-80/80	100			
	2	175 967	HMBV-ND				
	2	175 951	HMBF-DB				
	2	175 951	HMBF-DB				
	2	175 958	HMBS-80/80-...	150	100	100	100
	2	175 965	HMBSA-80/80	200	150	150	150
	2	175 967	HMBV-ND	250	200	200	200
	2	175 951	HMBF-DB		250		
	1	175 972	HMBSV				
	3	175 958	HMBS-80/80-...	320	320	250	250
	2	175 965	HMBSA-80/80		400	320	320
	2	175 967	HMBV-ND			400	400
	2	178 228	HMBSW				
	2	175 951	HMBF-DB				

Profile column configuration/ direction of movement	Quantity	Part No.	Type	Linear module HMPL Stroke [mm]	
				16	20
	1	175 958	HMBS-80/80-...	50	50
	1	175 965	HMBSA-80/80	80	80
	1	175 967	HMBV-ND	100	100
	2	175 951	HMBF-DB	125	125
				160	160
				200	200
	1	193 923	HMSV-46		

■ Mounting surfaces

Profile/drive combinations

Selection aid



Faster system building

Recommended combinations with mini slide SLT

Profile column configuration/ direction of movement	Quantity	Part No.	Type	Mini slide SLT Stroke [mm]				
				6	10	16	20	25
	1	175 958	HMBS-80/80-...	10	10	10	10	10
	1	175 965	HMBSA-80/80	20	20	20	20	20
	1	175 967	HMBV-ND	30	30	30	30	30
	2	175 951	HMBF-DB	40	40	40	40	40
	1	175 975	HMBK-WS	50	50	50	50	50
					80	80	80	80
						100	100	100
						125	125	125
						150	150	150
							200	200
	1	178 329	HMSV-34	■				
		178 330	HMSV-35		■			
		178 331	HMSV-36			■		
		178 332	HMSV-37				■	■

■ Mounting surfaces

System components
Basic components

3.1

Profile/drive combinations

Technical data

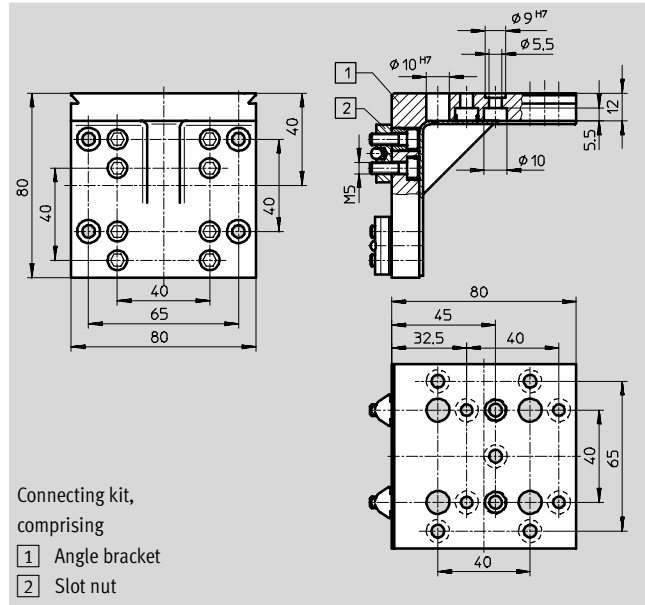


Connecting kit HMBV-ND

- for HMP, HMPL
- for SLT with HMBK-WS and HMSV-34 ... 37

Material:

Wrought aluminium alloy, anodised
Free of copper, PTFE and silicone



Ordering data				
Suitable for	Type of mounting	CRC ¹⁾	Part No.	Type
HMP, HMPL, SLT	Slot nut mounting	2	175 967	HMBV-ND

1) Corrosion resistance class 2 according to Festo standard 940 070
Components requiring moderate corrosion resistance. Externally visible parts with primarily decorative surface requirements which are in direct contact with a surrounding industrial atmosphere or media such as cooling or lubricating agents.

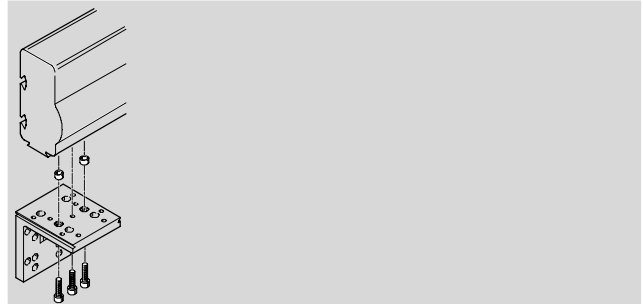
Profile/drive combinations

Technical data



Connecting kit HMBK-DB

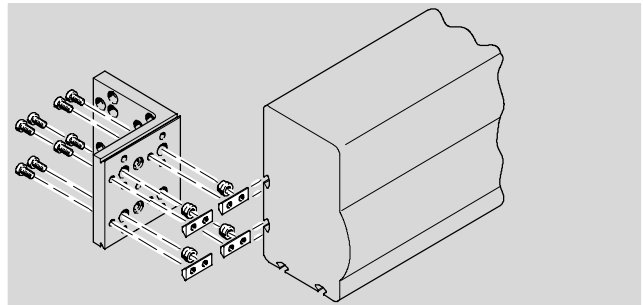
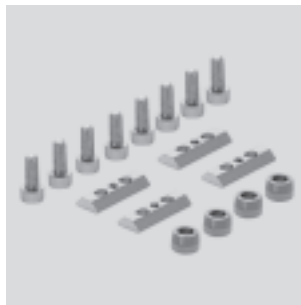
Material:
Steel



Ordering data				
Suitable for	Type of mounting	CRC ¹⁾	Part No.	Type
HMP, HMPL	Direct mounting	2	175 973	HMBK-DB

Connecting kit HMBK-ND

Material:
Steel
Tempered steel, non-alloyed
Free of copper, PTFE and silicone



Ordering data				
Suitable for	Type of mounting	CRC ¹⁾	Part No.	Type
HMP	Slot nut mounting	2	175 970	HMBK-ND

1) Corrosion resistance class 2 according to Festo standard 940 070
Components requiring moderate corrosion resistance. Externally visible parts with primarily decorative surface requirements which are in direct contact with a surrounding industrial atmosphere or media such as cooling or lubricating agents.

Profile/drive combinations

Technical data



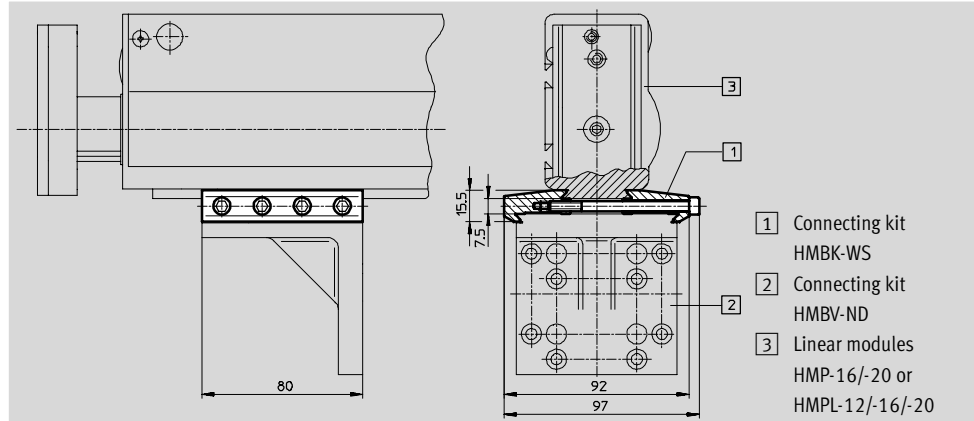
Connecting kit HMBK-WS

- for HMP-16/-20
- for HMPL with HMSV-46
- for SLT with HMSV-34 ... 37

Material:

Wrought aluminium alloy, anodised

Free of copper, PTFE and silicone



Ordering data				
Suitable for	Type of mounting	CRC ¹⁾	Part No.	Type
HMP, HMPL, SLT	Parallel dovetail mounting	2	175 975	HMBK-WS

1) Corrosion resistance class 2 according to Festo standard 940 070

Components requiring moderate corrosion resistance. Externally visible parts with primarily decorative surface requirements which are in direct contact with a surrounding industrial atmosphere or media such as cooling or lubricating agents.

Profile/drive combinations

Technical data

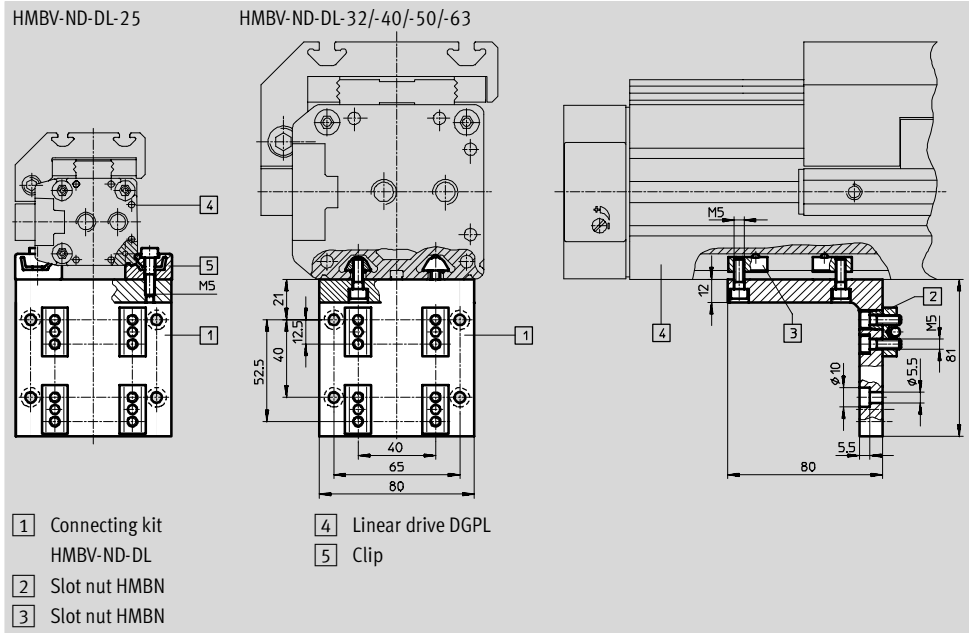
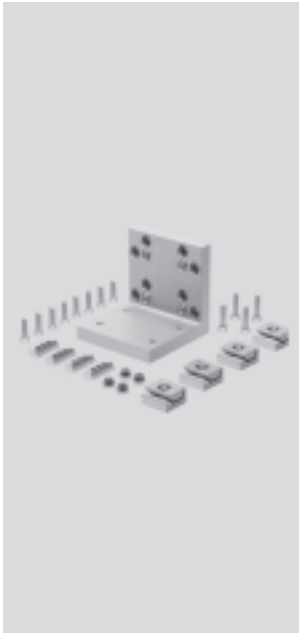


Connecting kit HMBV-ND-DL
 – for DGPL-25/-32/-40/-50/-63

Material:
 Wrought aluminium alloy, anodised
 Free of copper, PTFE and silicone

System components
 Basic components

3.1



Ordering data				
For Ø	Type of mounting	CRC ¹⁾	Part No.	Type
25	Slot nut mounting	2	175 985	HMBV-ND-DL25
32		2	175 988	HMBV-ND-DL32
40		2	175 991	HMBV-ND-DL40
50		2	175 994	HMBV-ND-DL50
63		2	175 997	HMBV-ND-DL63

1) Corrosion resistance class 2 according to Festo standard 940 070
 Components requiring moderate corrosion resistance. Externally visible parts with primarily decorative surface requirements which are in direct contact with a surrounding industrial atmosphere or media such as cooling or lubricating agents.

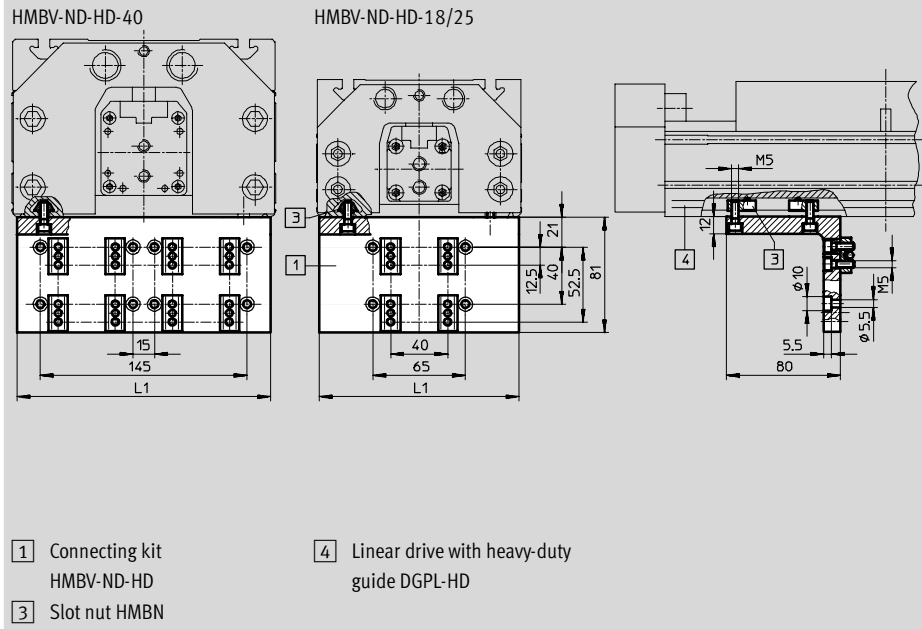
Profile/drive combinations

Technical data



Connecting kit HMBV-ND-HD
 – for DGPL-18/-25/-40-HD

Material:
 Wrought aluminium alloy, anodised
 Free of copper, PTFE and silicone



- 1 Connecting kit HMBV-ND-HD
- 3 Slot nut HMBN
- 4 Linear drive with heavy-duty guide DGPL-HD

Dimensions and ordering data					
For Ø	Type of mounting	L1	CRC ¹⁾	Part No.	Type
18	Slot nut mounting	115	2	175 976	HMBV-ND-HD18
25		140	2	175 979	HMBV-ND-HD25
40		178	2	175 982	HMBV-ND-HD40

1) Corrosion resistance class 2 according to Festo standard 940 070
 Components requiring moderate corrosion resistance. Externally visible parts with primarily decorative surface requirements which are in direct contact with a surrounding industrial atmosphere or media such as cooling or lubricating agents.

Profile/drive combinations

Accessories



System components
Basic components

3.1

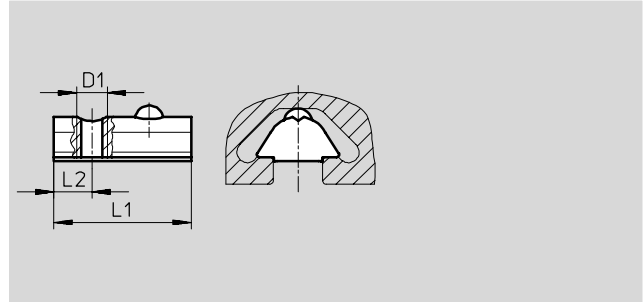
Combination options – Slot nuts/drives, profile column					
Drives		Slot nuts			
		HMBN-5-M5	HMBN-5-2M5	HMBN-8-M5	HMBN-8-2M5
Linear module HMP					
∅	16 ... 32	-	■	-	-
Linear drive DGPL, profile barrel					
∅	32	■	-	-	-
	40	■	-	-	-
	50	-	-	■	■
	63	-	-	■	■
Linear drive DGPL-HD, profile barrel at side					
∅	18	■	-	-	-
	25	■	-	-	-
	40	-	-	■	■
Linear drive DGPL-HD, profile barrel underneath					
∅	18	■	-	-	-
	25	-	-	■	■
	40	-	-	■	■
Profile column HMBS					
Dimensions	80x40	-	-	■	■
	80x80	-	-	■	■

Profile/drive combinations

Accessories

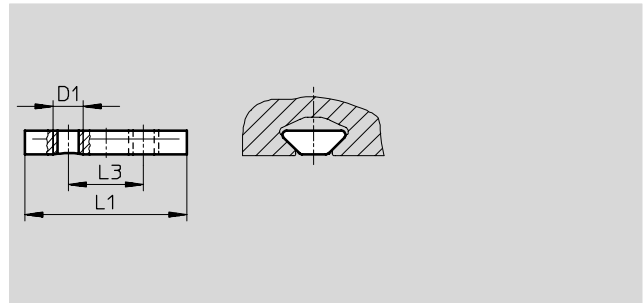
Slot nut HMBN-5-M5

Material:
Tempered steel, non-alloyed
Free of copper, PTFE and silicone



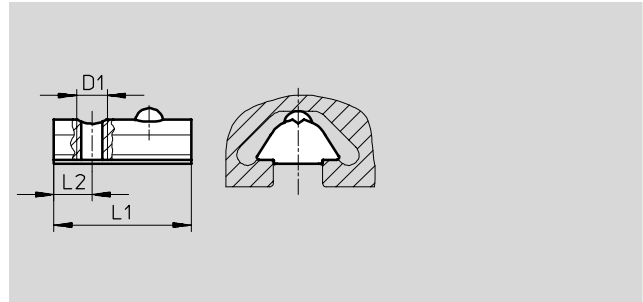
Slot nut HMBN-5-2M5

Material:
Tempered steel, non-alloyed
Free of copper, PTFE and silicone



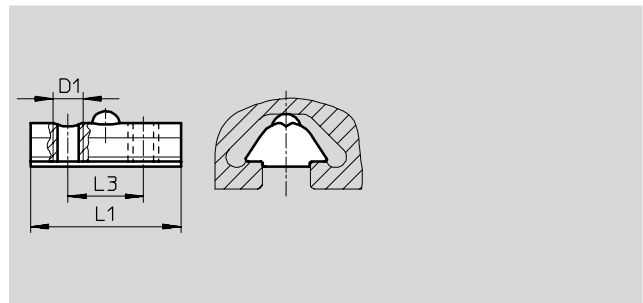
Slot nut HMBN-8-M5

Material:
Tempered steel, non-alloyed
Free of copper, PTFE and silicone



Slot nut HMBN-8-2M5

Material:
Tempered steel, non-alloyed
Free of copper, PTFE and silicone



Dimensions and ordering data							
D1	L1	L2	L3	CRC ¹⁾	Part No.	Type	PU ²⁾
M5	12	4	–	2	189 654	HMBN-5-M5	10
	27	–	12.5	2	186 566	HMBN-5-2M5	10
	22.5	6.25	–	2	189 655	HMBN-8-M5	10
	25	–	12.5	2	186 567	HMBN-8-2M5	10

1) Corrosion resistance class 2 according to Festo standard 940 070
Components requiring moderate corrosion resistance. Externally visible parts with primarily decorative surface requirements which are in direct contact with a surrounding industrial atmosphere or media such as cooling or lubricating agents.

2) Packaging unit quantity

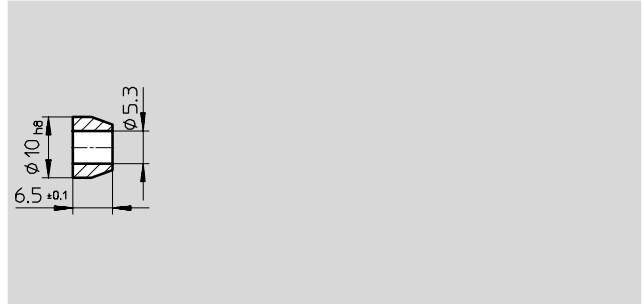
Profile/drive combinations

Accessories



Spacer ring HMBRD

Material:
Steel, corrosion-resistant
Free of copper, PTFE and silicone



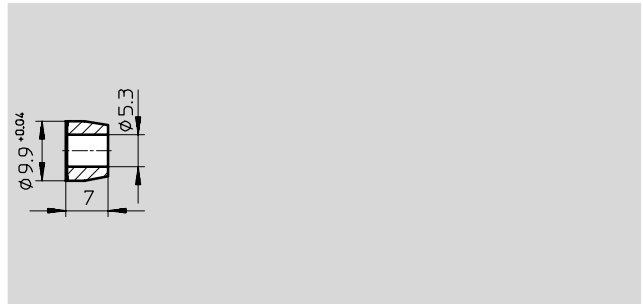
Ordering data			
CRC ¹⁾	Part No.	Type	PU ²⁾
2	186 563	HMBRD	10

System components
Basic components

3.1

Cutting ring HMBRS

Material:
Steel, corrosion-resistant
Free of copper, PTFE and silicone



Ordering data			
CRC ¹⁾	Part No.	Type	PU ²⁾
2	186 564	HMBRS	10

- 1) Corrosion resistance class 2 according to Festo standard 940 070
Components requiring moderate corrosion resistance. Externally visible parts with primarily decorative surface requirements which are in direct contact with a surrounding industrial atmosphere or media such as cooling or lubricating agents.
- 2) Packaging unit quantity

Profile/drive combinations

Accessories

Centring pin ZBS

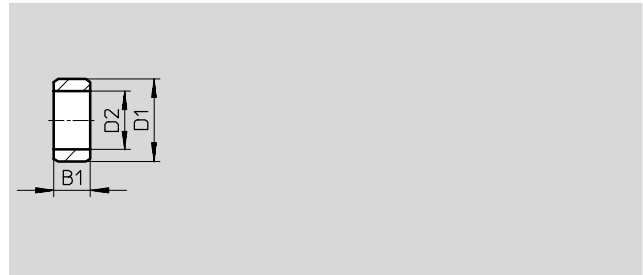
Material:
Steel, corrosion-resistant
Free of copper, PTFE and silicone



Dimensions and ordering data					
B1	D1	CRC ¹⁾	Part No.	Type	PU ²⁾
-0.2	∅ h8				
5	2	2	525 273	ZBS-02	10
5	5	2	150 928	ZBS-5	10

Centring sleeve ZBH

Material:
Steel, corrosion-resistant
Free of copper, PTFE and silicone



Dimensions and ordering data						
B1	D1	D2	CRC ¹⁾	Part No.	Type	PU ²⁾
-0.2	∅ h7	∅				
2.4	5	3.2	2	189 652	ZBH-5	10
3	7	5.3	2	189 717	ZBH-7	10
4	9	6.4	2	150 927	ZBH-9	10
5	12	10.3 +0.1	2	189 653	ZBH-12	10

Profile/drive combinations

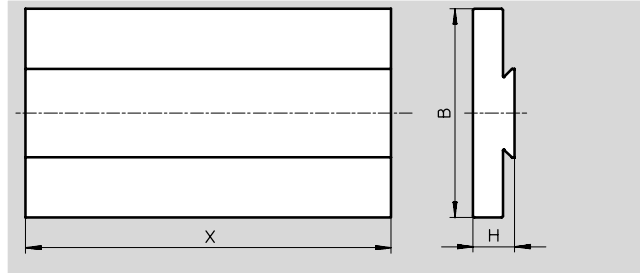
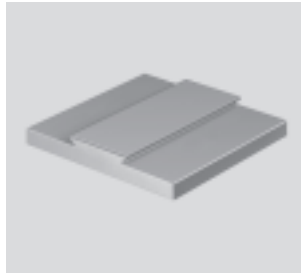
Accessories



Adapter plate HMAV-...-X

Universal dovetail profile for attaching a base or mounting plate to linear modules HMP or HMPL

Material:
Wrought aluminium alloy, anodised
Free of copper, PTFE and silicone

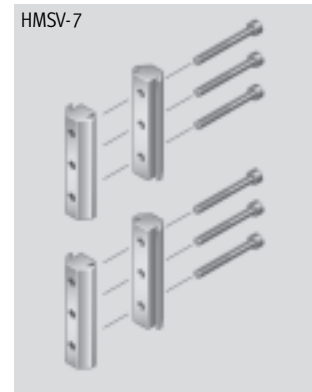
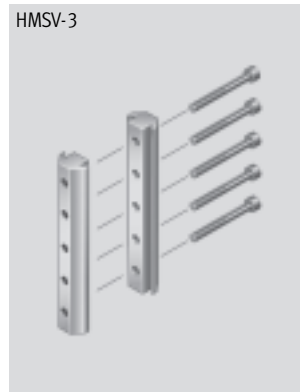


Dimensions and ordering data					
H	W	X	CRC ¹⁾	Part No.	Type
16	80	The length in mm must be quoted in the order	2	189 451	HMAV-80-X
13	90		2	189 450	HMAV-90-X

1) Corrosion resistance class 2 according to Festo standard 940 070
Components requiring moderate corrosion resistance. Externally visible parts with primarily decorative surface requirements which are in direct contact with a surrounding industrial atmosphere or media such as cooling or lubricating agents.

Adapter kit HMSV

Material:
Wrought aluminium alloy, anodised
Free of copper, PTFE and silicone



Dimensions and ordering data				
Length	Type of mounting	CRC ¹⁾	Part No.	Type
80	Dovetail mounting	2	177 647	HMSV-1
100		2	177 649	HMSV-3
2x 60		2	177 653	HMSV-7

1) Corrosion resistance class 2 according to Festo standard 940 070
Components requiring moderate corrosion resistance. Externally visible parts with primarily decorative surface requirements which are in direct contact with a surrounding industrial atmosphere or media such as cooling or lubricating agents.