

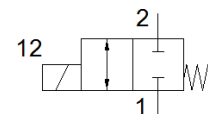
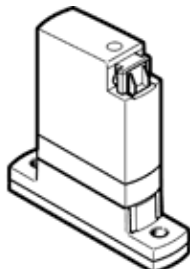
# media separated solenoid valve VYKA-F7-M22C-12-D2-PV-5YQ7

Broj artikla: 8114567

Komponenta koja će prestati da se proizvodi

Komponenta se više ne proizvodi. Isporučuje se do 2023. Vidi Support Portal za alternativni proizvod.

FESTO



## Tehnički podaci

Svojstvo	Vrednost
Konstruktivna struktura	Rocker valve with diaphragm seal
Princip zaptivanja	mekano
materijali u dodiru sa medijumom	FPM PEEK
Food-safe	See Supplementary material information
Funkcija ventila	2/2 zatvoren, monostabilan
Nazivni prečnik	1,2 mm
Smer protoka	reverzibilno sa ograničenjima
Način aktiviranja	električno
Vrsta upravljanja	direktno
Vrsta resetovanja	mehanička opruga
Ručno pomoćno aktiviranje	bez
Položaj ugradnje	proizvoljno
Vrsta pričvršćenja	With through-hole for M2 screw
Electrical connection 1, connection type	Utičnica
Electrical connection 1, connection technology	Connection pattern Q7
Electrical connection 1, number of pins/wires	2
Veličina	7
Mera mreže	7,5 mm
Fluid connection	Prirubnica
Medijum	Tečni mediji Gasoviti mediji
Note on the medium	Observe resistance of materials that come into contact with media Maximum particle size: 5 µm
Internal volume	15 µl fluid space valve 21 µl valve with fluid connections
Temperatura medija tekućih medijuma	0 ... 50 °C
Temperature of gaseous media	0 ... 50 °C
Temperatura okoline	0 ... 50 °C
Temperatura ležaja	-20 ... 70 °C
Pressure of medium	0 ... 0,2 MPa
Pritisak medijuma	0 ... 2 bar
Pressure of medium psi	0 ... 29 psi
Note on pressure of medium	IN:0-2/0-0,2/0-29 OUT:0-1/0-0,1/0-14,5
Burst pressure	2,3 MPa
Pritisak pucanja	23 bar
Burst pressure	333,5 psi
Područje pogonskog napona DC	12 ... 26 V
Note on operating voltage range DC	With electrical E-box VAVE-K1-...
Dozvoljena kolebanja napona	+/- 10 %
Električna primljena snaga	3,5 W

Svojstvo	Vrednost
Napomena uz primljenu snagu	Low-current phase 0.3 W, high-current phase 3.5 W for 60 ms, in combination with VAVE-K1-...
Parametri kalema	12 - 26 V DC: low-current phase 0.06 W, high-current phase 2.2 W
Klasa izolacije	B
Trajanje uključenosti	100% with holding current reduction Proučiti uputstva za pogon elektromagnetnih ventila
Maks. frekvencija prekidača	6 Hz
Note on switching frequency	Dependent on the ambient temperature and installation state For 100% duty cycle, dependent on the ambient temperature and installation state
Vreme uključenja za tečne medije	5 ms
Switching time on gaseous media	4 ms
Normalni nazivni protok	7,2 l/min
Information on standard nominal flow rate	In case of a pressure drop of 1 -> 0 bar (gaseous media)
Protok Kv	0,013 m <sup>3</sup> /h
Flow rate Kv (l/min)	0,22 l/min
Information on flow rate Kv	For water as medium Pressure difference 1 bar
Water flow rate at max. operating pressure	0,018 m <sup>3</sup> /h 0,3 l/min
Material housing	PA ojačan PEEK PPA pojačan
Material membrane	FPM
Material seals	FPM
Materijal - napomena	RoHS komfornost
PWIS conformity	VDMA24364 zone III
Težina proizvoda	10,9 g
Mehanička zaštita	IP40
Note on degree of protection	u montiranom stanju
Uputstva za korišćenje	For indoor use only
Klasa korozione otpornosti KBK	0 - No corrosion stress