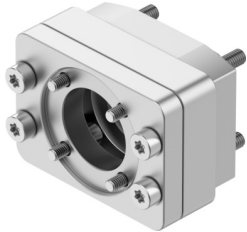


Set axial EAMM-A-L38-40G-G2

Numar piesa: 8197448

FESTO



Fisa de date

| Caracteristica | Valoare |
|------------------------------|-------------------------|
| Lungime nominala | 32 mm...32 mm |
| Pozitie de instalare | orice |
| Turatie max. | 8000 1/min...8000 1/min |
| Conformitatea LABS | VDMA24364-B2-L |
| Temperatura de depozitare | -25 °C...-25 °C |
| Umiditate relativa | 0 - 95 % |
| Tip de protectie | IP40 |
| Temperatura ambianta | -10 °C...-10 °C |
| Momentul de inertie al masei | 3.2 kgmm ² |
| Cuplu transmisibil | 4.4 Nm |
| Greutate produs | 228 g...228 g |
| Cod de interfata actuator | L38 |
| Codul interfetei motor In | 40G |
| Nota privind materialele | Conform RoHS |