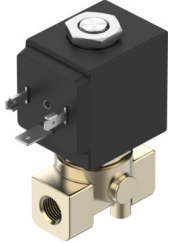


# Solenoid valve

## VZWD-B-L-M22C-M-N18-30-V-30-2A-A1-15

FESTO

Part number: 8214630



### Data sheet

Feature	Value
Structural design	Directly controlled poppet valve
Actuation type	Electrical
Sealing principle	Soft
Mounting position	Any
Type of mounting	Line installation
Fitting connection	1/8 NPT
Electrical connection	Form A Plug as per EN 175301-803 Rectangular design
Nominal width	3 mm...3 mm
Valve function	2/2, closed, monostable
Manual override	None
Flow direction	Non-reversible
Medium	Compressed air as per ISO 8573-1:2010 [7:4:4] Inert gas Mineral oil Water Neutral liquids Other flow media on request
Pressure difference	0 MPa 0 psi
Differential pressure	0 bar
Coil characteristics	110 V AC: 50/60 Hz, pick-up power 20.0 VA, holding power 15.0 VA
Insulation class	F
Permissible voltage fluctuations	+15 % / -10 %
Duty cycle	100%
Reset method	Mechanical spring
Type of control	Direct

Feature	Value
Medium pressure	0 MPa...0 MPa 0 bar...0 bar 0 psi...0 psi
Max. viscosity	25 mm <sup>2</sup> /s
Temperature of medium	-10 °C...-10 °C
Ambient temperature	-10 °C...-10 °C
Flow rate Kv	0.25 m <sup>3</sup> /h...0.25 m <sup>3</sup> /h
On switching time	8 ms...8 ms
Switching time off	25 ms...25 ms
Note on materials	RoHS-compliant
Housing material	Brass
Material number of housing	CW617N
Seals material	FPM
Product weight	300 g...300 g
CE marking (see declaration of conformity)	As per EU EMC directive As per EU low voltage directive As per EU RoHS directive
UKCA marking (see declaration of conformity)	To UK instructions for EMC To UK RoHS instructions To UK instructions for electrical equipment
Degree of protection	IP65
Corrosion resistance class (CRC)	1 - Low corrosion stress