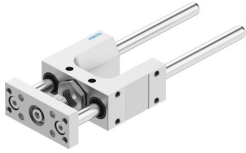


# Guide unit FEN-12/16-80-GF

Part number: 8204042

FESTO



## Data sheet

Feature	Value
Size	12/16
Stroke	80 mm
Mounting position	Any
Guide	Sliding guide
Structural design	Guide
Explosion prevention and protection	Observe the information on the certificate
LABS (PWIS) conformity	VDMA24364-B2-L
Ambient temperature	-20 °C...80 °C
Displacement force	15 N
Moving mass	257 g
Product weight	586 g
Type of mounting	With internal thread
Note on materials	RoHS-compliant
Material of guide component	High-alloy steel
Housing material	Wrought aluminum alloy, anodized
Material of yoke plate	Wrought aluminum alloy, anodized