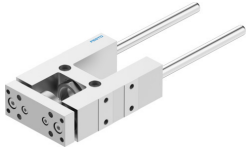


# Guide unit FEN-25-100-KF

Part number: 8204036

FESTO



## Data sheet

Feature	Value
Size	25
Stroke	100 mm
Mounting position	Any
Guide	Recirculating ball bearing guide
Structural design	Guide
Explosion prevention and protection	Observe the information on the certificate
LABS (PWIS) conformity	VDMA24364-B2-L
Ambient temperature	-20 °C...80 °C
Max. force Fy	520 N
Max. force Fy static	830 N
Max. force Fz	520 N
Max. force Fz static	830 N
Max. torque Mx	15 Nm
Max. static moment Mx	24 Nm
Max. torque My	20 Nm
Max. static moment My	31 Nm
Max. torque Mz	20 Nm
Max. static moment Mz	31 Nm
Displacement force	15 N
Moving mass	389 g
Product weight	933 g
Type of mounting	With internal thread
Note on materials	RoHS-compliant
Material of guide component	Tempered steel
Housing material	Wrought aluminum alloy, anodized
Material of yoke plate	Wrought aluminum alloy, anodized