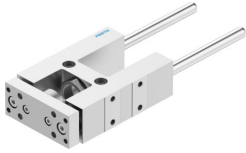


Guide unit FEN-25-80-KF

Part number: 8204035

FESTO



Data sheet

Feature	Value
Size	25
Stroke	80 mm
Mounting position	Any
Guide	Recirculating ball bearing guide
Structural design	Guide
Explosion prevention and protection	Observe the information on the certificate
LABS (PWIS) conformity	VDMA24364-B2-L
Ambient temperature	-20 °C...80 °C
Max. force F _y	520 N
Max. force F _y static	830 N
Max. force F _z	520 N
Max. force F _z static	830 N
Max. torque M _x	15 Nm
Max. static moment M _x	24 Nm
Max. torque M _y	20 Nm
Max. static moment M _y	31 Nm
Max. torque M _z	20 Nm
Max. static moment M _z	31 Nm
Displacement force	15 N
Moving mass	365 g
Product weight	909 g
Type of mounting	With internal thread
Note on materials	RoHS-compliant
Material of guide component	Tempered steel
Housing material	Wrought aluminum alloy, anodized
Material of yoke plate	Wrought aluminum alloy, anodized