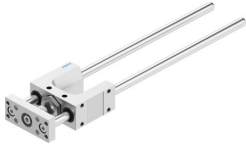


# Guide unit FEN-12/16-200-KF

Part number: 8204030

FESTO



## Data sheet

| Feature                             | Value                                      |
|-------------------------------------|--|
| Size                                | 12/16                                      |
| Stroke                              | 200 mm                                     |
| Mounting position                   | Any  |
| Guide                               | Recirculating ball bearing guide           |
| Structural design                   | Guide                                      |
| Explosion prevention and protection | Observe the information on the certificate |
| LABS (PWIS) conformity              | VDMA24364-B2-L                             |
| Ambient temperature                 | -20 °C...80 °C                             |
| Max. force Fy                       | 520 N                                      |
| Max. force Fy static                | 830 N                                      |
| Max. force Fz                       | 520 N                                      |
| Max. force Fz static                | 830 N                                      |
| Max. torque Mx                      | 12 Nm                                      |
| Max. static moment Mx               | 20 Nm                                      |
| Max. torque My                      | 7 Nm                                       |
| Max. static moment My               | 12 Nm                                      |
| Max. torque Mz                      | 7 Nm                                       |
| Max. static moment Mz               | 12 Nm                                      |
| Displacement force                  | 15 N                                       |
| Moving mass                         | 401 g                                      |
| Product weight                      | 669 g                                      |
| Type of mounting                    | With internal thread                       |
| Note on materials                   | RoHS-compliant                             |
| Material of guide component         | Tempered steel                             |
| Housing material                    | Wrought aluminum alloy, anodized           |
| Material of yoke plate              | Wrought aluminum alloy, anodized           |