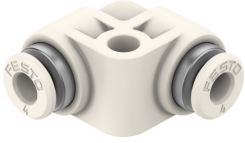


Push-in L-connector NPQO-L-Q4-E-P10

Part number: 8203321

FESTO



Data sheet

Feature	Value
Nominal width	3 mm
Tubing insertion depth	14.8 mm
Mounting position	Any
Design	L-shape
Pack size	10
Structural design	Push-pull principle
Variants	With mounting holes
Operating pressure for entire temperature range	-0.09 MPa...0.3 MPa -0.9 bar...3 bar -13.05 psi...43.5 psi
Temperature-dependent operating pressure	-0.09 MPa...1.6 MPa -0.9 bar...16 bar -13.05 psi...232 psi
Operating medium	Compressed air as per ISO 8573-1:2010 [7:4:4] Inert gas Carbon dioxide Air Oxygen Nitrogen
Corrosion resistance class (CRC)	2 - Moderate corrosion stress
LABS (PWIS) conformity	VDMA24364 zone III
For use in the food industry	See supplementary material information
Temperature of medium	0 °C...120 °C
Ambient temperature	0 °C...60 °C
Biocompatibility according to standard	ISO 18562
Oxygen suitability according to standard	ASTM G 93 ISO 15001
Impurity level, hydrocarbons maximum	550 MGM
Product weight	7.58 g
Pneumatic connection 1	for pneumatic tubing outside diameter 4 mm
Pneumatic connection 2	for pneumatic tubing outside diameter 4 mm
Ambient temperature Fahrenheit	32 °F...140 °F
Releasing ring color	White
Note on materials	RoHS-compliant

Feature	Value
Housing material	PVDF
Releasing ring material	PVDF
O-ring material	FPM
Material of tubing seal	FPM
Material of tube retaining claw	High-alloy stainless steel
Thrust ring material	PVDF