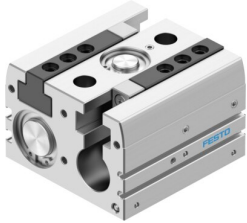


# Parallel gripper HPPL-32-40-A-F1A

Part number: 8200779

FESTO



## Data sheet

Feature	Value
Size	32
Complete stroke	40 mm
Stroke per gripper jaw	20 mm
Max. gripper jaw angular play ax, ay	0.2 deg
Max. gripper jaw backlash Sz	0.05 mm
Pneumatic gripper repetition accuracy	0.03 mm
Number of gripper jaws	2
Actuator system	Pneumatic
Mounting position	Any
Mode of operation	Double-acting
Cushioning	Elastic cushioning rings/pads at both ends, without fixed metal stop
Gripper function	Parallel
Gripping force backup	Without
Structural design	Twin piston Guide Piston gate valve T-shape Gear rack/pinion
Guide	Heavy-duty guide
Position sensing	For proximity sensor
Variants	Metals with copper, zinc or nickel by mass as main constituent are excluded from use. Exceptions are nickel in steel, chemically nickel-plated surfaces, printed circuit boards, cables, electrical plug connectors and coils.
Operating pressure	0.2 MPa...0.8 MPa 2 bar...8 bar 29 psi...116 psi
Min. opening time at 6 bar	96 ms
Min. closing time at 6 bar	70 ms
Max. mass per external gripper finger	330 g
Operating medium	Compressed air as per ISO 8573-1:2010 [7:4:4]
Information on operating and pilot media	Operation with oil lubrication possible (required for further use)
Shock resistance	Shock test with severity level 2 as per FN 942017-5 and EN 60068-2-27
Corrosion resistance class (CRC)	1 - Low corrosion stress

Feature	Value
LABS (PWIS) conformity	VDMA24364-B1/B2-L
Suitability for the production of Li-ion batteries	Suitable for battery production with reduced Cu/Zn/Ni values (F1a)
Vibration resistance	Transport application test with severity level 2 as per FN 942017-4 and EN 60068-2-6
Degree of protection	IP40
Ambient temperature	-10 °C...80 °C
Gripping force per gripper jaw at 6 bar, opening	654 N 327 N
Gripping force per gripper jaw at 6 bar, closing	790 N 395 N
Theoretical total gripping force at 0 mm, 0.6 MPa (6 bar, 87 psi) open	754 N
Theoretical total gripping force at 0 mm, 0.6 MPa (6 bar, 87 psi) close	890 N
Theoretical opening gripping force per Gripper jaw at 0 mm, 0.6 MPa (6 bar, 87 psi)	377 N
Close theoretical gripping force per Gripper jaw at 0 mm, 0.6 MPa (6 bar, 87 psi)	445 N
Mass moment of inertia	16.85 kgcm <sup>2</sup>
Max. force Fz	2200 N
Maximum torque on gripper jaw, Mx static	115 Nm
Maximum torque on gripper jaw, My static	70 Nm
Maximum torque on gripper jaw, Mz static	85 Nm
Product weight	1361 g
Type of mounting	With internal thread and centering sleeve Via through-hole and centering sleeve
Pneumatic connection	M5
Note on materials	RoHS-compliant Copper-free
Cover cap material	Wrought aluminum alloy, anodized
End plate material	Wrought aluminum alloy, anodized
Housing material	Wrought aluminum alloy, anodized
Gripper jaw material	High-alloy stainless steel
Material of piston	Wrought aluminum alloy, anodized
Piston seal material	TPE-U(PU)
Piston rod material	High-alloy stainless steel
O-ring material	NBR
Material of screws	Steel, chemically nickel-plated
Gear wheel material	High-alloy steel
Gripper finger material	Wrought aluminum alloy, anodized