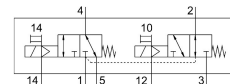


# Solenoid valve VSVA-B-T32H-MZH-D1-F8

Part number: 8198577

FESTO



## Data sheet

Feature	Value
Valve function	2x3/2, open/closed, monostable
Actuation type	Electrical
Width	42 mm
Nominal flow rate standardized according to ISO 8778	1400 l/min
Pneumatic working port	Sub-base, size 1 according to ISO 5599-1
Operating pressure	-0.09 MPa...1 MPa -0.9 bar...10 bar
Structural design	Piston gate valve
Reset method	Mechanical spring
Degree of protection	IP65 NEMA 4
Nominal width	8 mm
Width dimension	43 mm
Exhaust air function	Via individual sub-base
Sealing principle	Soft
Mounting position	Any
Conforms to standard	ISO 5599-1
Manual override	Non-detenting
Type of control	Pilot-controlled
Pilot air supply port	External
Flow direction	Reversible
Lap	Overlap
Pilot pressure MPa	0.3 MPa...1 MPa
Pilot pressure	3 bar...10 bar
Suitability for vacuum	yes
b-value	0.2
C value	5.479 l/sbar
Flow rate of pneumatic valve	1300 l/min
Flow rate of pneumatic valve on individual sub-base	1100 l/min
Optimized flow rate of pneumatic valve, pneumatically concatenated flow	1200 l/min
Optimized flow rate of pneumatic valve pneumatically concatenated flow	1100 l/min

Feature	Value
Max. switching frequency	5 Hz
Switching time off	25 ms
On switching time	22 ms
Duty cycle	100%
Operating medium	Compressed air as per ISO 8573-1:2010 [7:4:4]
Information on operating and pilot media	Operation with oil lubrication possible (required for further use)
LABS (PWIS) conformity	VDMA24364-B1/B2-L
Temperature of medium	-10 °C...50 °C
Relative air humidity	0 - 90 %
Noise level	85 dB(A)
Pilot medium	Compressed air as per ISO 8573-1:2010 [7:4:4]
Ambient temperature	-10 °C...50 °C
Max. tightening torque for valve mounting	1 Nm
Product weight	400 g
Type of mounting	On sub-base
Pilot air port 12	Sub-base, size 1 as per ISO 5599-1
Pilot air port 14	Sub-base, size 1 as per ISO 5599-1
Pneumatic connection 1	Sub-base, size 1 as per ISO 5599-1
Pneumatic connection 2	Sub-base, size 1 as per ISO 5599-1
Pneumatic connection 3	Sub-base, size 1 as per ISO 5599-1
Pneumatic connection 4	Sub-base, size 1 as per ISO 5599-1
Pneumatic connection 5	Sub-base, size 1 as per ISO 5599-1
Pilot interface	as per ISO 15218
Note on materials	RoHS-compliant
Seals material	NBR
Housing material	Die-cast aluminum
Material of screws	Steel