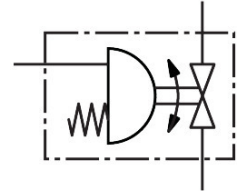
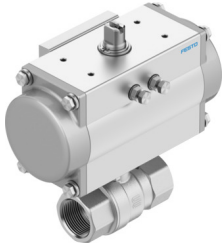


# Ball valve unit

## VAPB-A-1/2-F-40-F03-PB20

Part number: 8191928

**FESTO**



## Data sheet

Feature	Value
Structural design	2-way ball valve Quarter turn actuator
Actuation type	Pneumatic
Sealing principle	Soft
Mounting position	Any
Type of mounting	Line installation
Fitting connection	Rp1/2
Switching position indication	Slot direction = flow direction
Flange hole pattern	F03
Nominal width DN	15
Valve function	2/2
Flow direction	Reversible
Operating pressure	0.55 MPa...0.8 MPa 5.5 bar...8 bar 79.75 psi...116 psi
Nominal pressure of fitting PN	40
Breakaway torque at differential pressure, nominal pressure, fitting PN	5 Nm
Based on norm	EN 10226-1 ISO 5211
Medium	Compressed air as per ISO 8573-1:2010 [:-:-:-] Inert gas Water – no water vapor Neutral liquids Other flow media on request
Operating medium	Compressed air as per ISO 8573-1:2010 [7:4:4]
Information on operating and pilot media	Operation with oil lubrication possible (required for further use)
Temperature of medium	-10 °C...200 °C
Flow rate Kv	17 m³/h
Note on materials	RoHS-compliant
LABS (PWIS) conformity	VDMA24364 zone III
Housing material	Brass, nickel-plated
Material number of housing	2.0402 CW617N

Feature	Value
Seat seal material	PTFE
Seals material	HNBR PTFE
Ball material	Brass Hard-chrome-plated
Material number for ball	2.0401 CW614N
Shaft material	Brass
Material number for shaft	2.0401 CW614N
Product weight	1820 g
Corrosion resistance class (CRC)	1 - Low corrosion stress