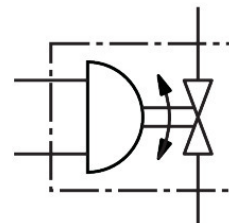


Ball valve unit

VAPB-A-1 1/2-F-25-F0405-PA40

Part number: 8191923

FESTO



Data sheet

Feature	Value
Structural design	2-way ball valve Quarter turn actuator
Actuation type	Pneumatic
Sealing principle	Soft
Mounting position	Any
Type of mounting	Line installation
Fitting connection	Rp1 1/2
Switching position indication	Slot direction = flow direction
Flange hole pattern	F0405
Nominal width DN	40
Valve function	2/2
Flow direction	Reversible
Operating pressure	0.55 MPa...0.8 MPa 5.5 bar...8 bar 79.75 psi...116 psi
Nominal pressure of fitting PN	25
Breakaway torque at differential pressure, nominal pressure, fitting PN	19 Nm
Based on norm	EN 10226-1 ISO 5211
Medium	Compressed air as per ISO 8573-1:2010 [-:~:] Inert gas Water – no water vapor Neutral liquids Other flow media on request
Operating medium	Compressed air as per ISO 8573-1:2010 [7:4:4]
Information on operating and pilot media	Operation with oil lubrication possible (required for further use)
Temperature of medium	-10 °C...200 °C
Flow rate Kv	200 m³/h
Note on materials	RoHS-compliant
LABS (PWIS) conformity	VDMA24364 zone III
Housing material	Brass, nickel-plated

Feature	Value
Material number of housing	2.0402 CW617N
Seat seal material	PTFE
Seals material	HNBR PTFE
Ball material	Brass Hard-chrome-plated
Material number for ball	2.0402 CW617N
Shaft material	Brass
Material number for shaft	2.0401 CW614N
Product weight	3900 g
Corrosion resistance class (CRC)	1 - Low corrosion stress