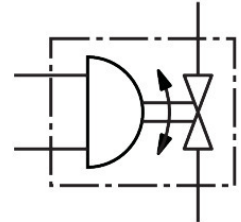


**Ball valve unit**  
**VAPB-A-3/8-F-40-F03-PA10**  
 Part number: 8191918

**FESTO**



**Data sheet**

| Feature   | Value   |
|---|---|
| Structural design   | 2-way ball valve<br>Quarter turn actuator   |
| Actuation type  | Pneumatic   |
| Sealing principle   | Soft  |
| Mounting position   | Any   |
| Type of mounting  | Line installation   |
| Fitting connection  | Rp3/8   |
| Switching position indication   | Slot direction = flow direction   |
| Flange hole pattern   | F03   |
| Nominal width DN  | 15  |
| Valve function  | 2/2   |
| Flow direction  | Reversible  |
| Operating pressure  | 0.55 MPa...0.8 MPa<br>5.5 bar...8 bar<br>79.75 psi...116 psi  |
| Nominal pressure of fitting PN  | 40  |
| Breakaway torque at differential pressure, nominal pressure, fitting PN | 5 Nm  |
| Based on norm   | EN 10226-1  |
| Medium  | Compressed air as per ISO 8573-1:2010 [-:~:]<br>Inert gas<br>Water – no water vapor<br>Neutral liquids<br>Other flow media on request |
| Operating medium  | Compressed air as per ISO 8573-1:2010 [7:4:4]   |
| Information on operating and pilot media                                | Operation with oil lubrication possible (required for further use)  |
| Temperature of medium   | -10 °C...200 °C   |
| Flow rate Kv  | 9.4 m³/h  |
| Note on materials   | RoHS-compliant  |
| LABS (PWIS) conformity  | VDMA24364 zone III  |
| Housing material  | Brass, nickel-plated  |
| Material number of housing  | 2.0402<br>CW617N  |

| Feature                          | Value                       |
|----------------------------------|-----------------------------|
| Seat seal material               | PTFE                        |
| Seals material                   | HNBR<br>PTFE                |
| Ball material                    | Brass<br>Hard-chrome-plated |
| Material number for ball         | 2.0401<br>CW614N            |
| Shaft material                   | Brass                       |
| Material number for shaft        | 2.0401<br>CW614N            |
| Product weight                   | 1440 g                      |
| Corrosion resistance class (CRC) | 1 - Low corrosion stress    |