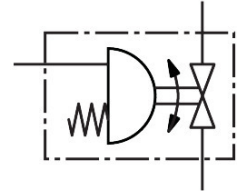


Ball valve unit VZBE-A-1-T-63-T-2-F0405-V15V15-PB80

Part number: 8191910

FESTO



Data sheet

Feature	Value
Structural design	2-way ball valve Quarter turn actuator
Actuation type	Pneumatic
Sealing principle	Soft
Mounting position	Any
Type of mounting	Line installation
Fitting connection	1 NPT
Switching position indication	Slot direction = flow direction
Flange hole pattern	F0405
Nominal width DN	25
Valve function	2/2
Flow direction	Reversible
Operating pressure	0.55 MPa...0.8 MPa 5.5 bar...8 bar 79.75 psi...116 psi
Nominal pressure of fitting PN	63
Breakaway torque at differential pressure, nominal pressure, fitting PN	15 Nm
Based on norm	ASME B1.20.1 ISO 5211
Medium	Compressed air as per ISO 8573-1:2010 [:-:-] Inert gas Water – no water vapor Neutral liquids Other flow media on request
Operating medium	Compressed air as per ISO 8573-1:2010 [7:4:4]
Information on operating and pilot media	Operation with oil lubrication possible (required for further use)
Temperature of medium	-10 °C...200 °C
Flow rate Kv	94 m³/h
Max. surface temperature of assembly	+105°C...+280°C T4...T2
Explosion group of assembly	IIC, IIIC
Note on materials	RoHS-compliant
LABS (PWIS) conformity	VDMA24364 zone III

Feature	Value
Housing material	Cast stainless steel
Material number of housing	1.4408
Seat seal material	PTFE
Seals material	FPM PTFE
Ball material	Cast stainless steel
Material number for ball	1.4408
Shaft material	High-alloy stainless steel
Product weight	4890 g
Explosion prevention and protection	Zone 1 (ATEX) Zone 2 (ATEX) Zone 21 (ATEX) Zone 22 (ATEX)
Explosive ambient temperature	-10°C ≤ Ta ≤ +80°C
Corrosion resistance class (CRC)	1 - Low corrosion stress