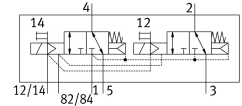
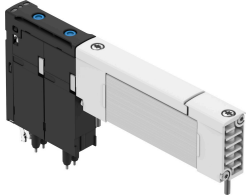


Solenoid valve VUVX-BK10-T32C-MZH-F-1T1L

Part number: 8187061

FESTO



Data sheet

Feature	Value
Valve function	2x3/2, closed, monostable
Actuation type	Electrical
Valve size	10 mm
Nominal flow rate standardized according to ISO 8778	600 l/min
Operating voltage	24V DC
Operating pressure	0 MPa...0.7 MPa 0 bar...7 bar
Structural design	Piston slide with sealing ring
Reset method	Mechanical spring
Degree of protection	IP65
Width	10.35 mm
Nominal width	3.8 mm
Exhaust air function	With flow control option
Sealing principle	Soft
Mounting position	Any
Manual override	Non-detenting
Type of control	Pilot-controlled
Pilot air supply port	External
Flow direction	Reversible
Lap	Underlap
Signal status display	yes
Pilot pressure MPa	0.2 MPa...0.7 MPa
Pilot pressure	2 bar...7 bar
Suitability for vacuum	no
b-value	0.34
C value	2.3 l/sbar
Nominal flow rate standardized according to ISO 8778 exhaust 2-3	650 l/min
Switching time off	17 ms
On switching time	14 ms
Duty cycle	100%
Max. positive test pulse with 0 signal	1400 µs
Max. negative test pulse on 1 signal	800 µs

Feature	Value
Coil characteristics	24V DC: 0,35W
Permissible voltage fluctuations	+/- 10 %
Operating medium	Compressed air as per ISO 8573-1:2010 [7:4:4]
Information on operating and pilot media	Ester oil < 0.1mg/m ³ , according to ISO 8573-1:2010 [:-:2] Operation with oil lubrication possible (required for further use)
Vibration resistance	Transport application test with severity level 2 as per FN 942017-4 and EN 60068-2-6
Shock resistance	Shock test with severity level 1 as per FN 942017-5 and EN 60068-2-27
Corrosion resistance class (CRC)	1 - Low corrosion stress
LABS (PWIS) conformity	VDMA24364-C1-L
Storage temperature	-20 °C...70 °C
For use in the food industry	See supplementary material information
Temperature of medium	-5 °C...50 °C
Relative air humidity	5 - 95 %
Pilot medium	Compressed air as per ISO 8573-1:2010 [7:4:4]
Ambient temperature	-5 °C...50 °C
Max. tightening torque for valve mounting	0.375 Nm
Product weight	52.6 g
Electrical connection	Plug-in
Type of mounting	On sub-base
Pilot air port 12/14	Sub-base
Pilot exhaust air port 82/84	Sub-base
Pilot air port 12	Sub-base
Pneumatic connection 1	Sub-base
Pneumatic connection 2	Sub-base
Pneumatic connection 3	Sub-base
Pneumatic connection 4	Sub-base
Pneumatic connection 5	Sub-base
Pneumatic connection 82	Sub-base
Note on materials	RoHS-compliant
Seals material	HNBR
Material of dynamic seals	HNBR
Housing material	Wrought aluminum alloy, anodized
Material of spring	High-alloy stainless steel
Piston slide material	POM
Material of screws	Stainless steel