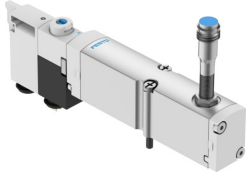


Solenoid valve VMPA14-M1H-MS-PI

Part number: 8186954

FESTO



Data sheet

Feature	Value
Valve function	2x3/2, open/closed, monostable
Actuation type	Electrical
Valve size	10 mm
Standard nominal flow rate	670 l/min...840 l/min
Operating voltage	24V DC
Operating pressure	-0.09 MPa...1 MPa -0.9 bar...10 bar
Structural design	Piston gate valve
Reset method	Mechanical spring
Certification	c UL us - Recognized (OL)
CE marking (see declaration of conformity)	As per EU EMC directive As per EU RoHS directive
Certificate issuing authority	UL MH19482
Degree of protection	IP65 In mounted state as per IEC 60529
Sealing principle	Soft
Mounting position	Any
Manual override	Detenting Non-detenting
Type of control	Pilot-controlled
Flow direction	Reversible
Switching element function	N/C contact
Lap	Overlap
Signal status display	yes
Pilot pressure MPa	0.4 MPa...0.8 MPa
Pilot pressure	4 bar...8 bar
Suitability for vacuum	yes
Note on standard nominal flow rate	1->2: 670 l/min 1->4: 550 l/min
Standard nominal flow rate with QS-6	550 l/min...670 l/min
Max. switching frequency	2 Hz
Switching time off	30 ms

Feature	Value
On switching time	10 ms
Max. positive test pulse with 0 signal	400 µs
Max. negative test pulse on 1 signal	200 µs
Switching output	PNP
Permissible voltage fluctuations	+/- 25 %
Operating medium	Compressed air as per ISO 8573-1:2010 [7:4:4]
Information on operating and pilot media	Operation with oil lubrication possible (required for further use)
Vibration resistance	Transport application test with severity level 2 as per FN 942017-4 and EN 60068-2-6
Shock resistance	Shock test with severity level 2 as per FN 942017-5 and EN 60068-2-27
Corrosion resistance class (CRC)	3 - High corrosion stress
Storage temperature	-20 °C...40 °C
Temperature of medium	-5 °C...50 °C
Relative air humidity	Max. 90 % at 40 °C
Ambient temperature	-5 °C...50 °C
Max. tightening torque for valve mounting	0.25 Nm
Product weight	118 g
DC sensor operating voltage range	10 V...30 V
Sensor short circuit protection	Pulsed
Sensor idle current	10 mA
Max. output current, sensor	200 mA
Sensor max. switching frequency	5000 Hz
Sensor residual ripple	± 10 %
Sensor voltage drop	2 V
Sensor connection	Plug Cable 4-pin M12x1 0.5 m
Type of mounting	With through-hole
Note on materials	RoHS-compliant
Seals material	NBR
Housing material	PPA-reinforced