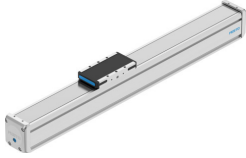


# Guide axis ELFD-KF-60- -

Part number: 8182487

FESTO



## Data sheet

Feature	Value
Size	60
Stroke reserve	4.5 mm
Mounting position	Any
Guide	Recirculating ball bearing guide
Structural design	Guide
Max. acceleration	50 m/s <sup>2</sup>
Max. speed	3 m/s
Duty cycle	100%
Corrosion resistance class (CRC)	0 - No corrosion stress
LABS (PWIS) conformity	VDMA24364 zone III
Suitability for the production of Li-ion batteries	Metals with more than 1% by mass of copper, zinc or nickel are excluded from use. The exceptions are nickel in steel, chemically nickel-plated surfaces, circuit boards, cables, electrical plug connectors and coils
Degree of protection	IP30
Ambient temperature	0 °C...60 °C
2nd moment of area Iy	485200 mm <sup>4</sup>
2nd moment of area Iz	730600 mm <sup>4</sup>
Max. force Fy	2200 N...4400 N
Max. force Fz	2200 N...4400 N
Max. torque Mx	38 Nm...75 Nm
Max. torque My	42 Nm...390 Nm
Max. torque Mz	15 Nm...140 Nm
Max. force Fy total axis	1513 N...3026 N
Max. force Fz total axis	2200 N...3200 N
Max. moment Mx total axis	38 Nm...75 Nm
Max. moment My total axis	15 Nm...128 Nm
Max. moment Mz total axis	15 Nm...133 Nm
Torsion moment of inertia It	192900 mm <sup>4</sup>
Displacement force	6 N
Reference service life	5000 km
Fy with theoretical service life of 100 km (from a guide perspective only)	9208 N...18415 N
Fz with theoretical service life of 100 km (from a guide perspective only)	9208 N...18415 N

<b>Feature</b>	<b>Value</b>
Mx with theoretical service life of 100 km (from a guide perspective only)	157 Nm...314 Nm
My with theoretical service life of 100 km (from a guide perspective only)	60 Nm...500 Nm
Mz with theoretical service life of 100 km (from a guide perspective only)	60 Nm...500 Nm
Moving mass	419 g...643 g
Basic weight with 0 mm stroke	1261 g...1683 g
Additional weight per 10 mm stroke	49 g
Material of end caps	Aluminum gravity die-cast, painted
Profile material	Wrought aluminum alloy, anodized
Note on materials	RoHS-compliant
Cover strip material	High-alloy stainless steel
Cover material	Aluminum gravity die-cast, painted
Slide carriage material	Steel
Guide rail material	Steel
Slide material	Wrought aluminum alloy