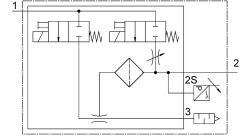
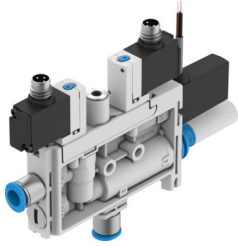


# Vacuum generator OVEL-10-H-15-PQ-VQ6-UA-C-A-V1PNLK-R8

FESTO

Part number: 8152242



## Data sheet

| Feature                                  | Value  |
|--|--|
| Nominal width of Laval nozzle            | 0.95 mm  |
| Width dimension                          | 15 mm  |
| Muffler construction type                | Open   |
| Mounting position                        | Any  |
| Ejector characteristics                  | High vacuum<br>Standard  |
| Grade of filtration                      | 40 µm  |
| Manual override                          | Non-detenting  |
| Integrated function                      | Electric ejector pulse<br>Flow control<br>Pressure sensor<br>Shut off valve, electric<br>Compressed air filter<br>Pneumatic muffler open |
| Structural design                        | T-shape  |
| Switching element function               | N/C contact/N/O contact switchable   |
| Switching function                       | Freely programmable  |
| Valve function                           | Closed   |
| Method of measurement                    | Piezoresistive pressure sensor with display  |
| Display type                             | LED display<br>2-digit   |
| Setting options                          | IO-Link®<br>Teach-in<br>Via display and pushbuttons  |
| Operating pressure for max. suction rate | 0.4 MPa<br>4 bar<br>58 psi   |
| Operating pressure                       | 0.2 MPa...0.7 MPa<br>2 bar...7 bar<br>29 psi...101.5 psi   |
| Operating pressure for max. vacuum       | 0.38 MPa<br>3.8 bar<br>55.1 psi  |
| Max. vacuum                              | 92 %   |

| Feature  | Value   |
|--|---|
| Nominal operating pressure                                       | 0.4 MPa<br>4 bar<br>58 psi                              |
| Max. suction rate with respect to atmosphere                     | 21 l/min  |
| Air supply time at nominal operating pressure with ejector pulse | 1 s   |
| DC operating voltage range                                       | 21.6 V...26.4 V   |
| Duty cycle   | 100%  |
| Switching output   | PNP/NPN switchable                                      |
| Coil characteristics   | 24 V DC: 1.28 W   |
| Certification  | c UL us - Listed (OL)                                   |
| KC characters  | KC EMC  |
| CE marking (see declaration of conformity)                       | As per EU EMC directive                                 |
| UKCA marking (see declaration of conformity)                     | To UK instructions for EMC                              |
| Operating medium   | Compressed air as per ISO 8573-1:2010 [7:4:4]           |
| Information on operating and pilot media                         | Operation with oil lubrication not possible             |
| Corrosion resistance class (CRC)                                 | 2 - Moderate corrosion stress                           |
| LABS (PWIS) conformity   | VDMA24364-B1/B2-L                                       |
| Temperature of medium  | 0 °C...50 °C  |
| Noise level at nominal operating pressure                        | 68 dB(A)  |
| Degree of protection   | IP40  |
| Ambient temperature  | 0 °C...50 °C  |
| Product weight   | 100 g   |
| DC sensor operating voltage range                                | 18 V...30 V   |
| Pressure measuring range   | -0.1 MPa...0 MPa<br>-1 bar...0 bar<br>-14.5 psi...0 psi |
| Electrical connection input, function                            | Ejector pulse<br>Vacuum generator                       |
| Electrical connection input, connection type                     | 2x plugs  |
| Electrical input connection, connection technology               | M8x1, A-coded as per EN 61076-2-104                     |
| Electrical connection, input, number of pins/wires               | 2   |
| Electrical input connection, mounting type                       | Snap-locking  |
| Electrical connection output, function                           | Sensor  |
| Electrical connection output, connection type                    | Cable   |
| Electrical connection output, connection technology              | Open end  |
| Electrical output connection, number of pins/wires               | 3   |
| Cable characteristic   | Suitable for energy chains                              |
| Cable diameter   | 2.9 mm  |
| Cable diameter tolerance   | ± 0.1 mm  |
| Cable length   | 2.5 m   |
| Nominal conductor cross section                                  | 0.14 mm <sup>2</sup>                                    |
| Type of mounting   | With through-hole                                       |
| Pneumatic connection 1   | For pneumatic tubing outside diameter 6 mm              |
| Pneumatic connection 3   | Pneumatic muffler open                                  |
| Vacuum connection  | For pneumatic tubing outside diameter 6 mm              |
| Color cable sheath   | Gray  |
| Material of connecting thread                                    | POM   |
| Note on materials  | RoHS-compliant  |
| Seals material   | NBR   |
| Female nozzle material   | POM   |
| Compressed air filter material                                   | POM   |
| Housing material   | PA-reinforced   |
| Material of cable sheath   | PVC   |
| Material of adjusting screw                                      | Steel   |

| <b>Feature</b>         | <b>Value</b>           |
|------------------------|------------------------|
| Muffler material       | PA-reinforced          |
| Material of screws     | Steel                  |
| Material of jet nozzle | Wrought aluminum alloy |