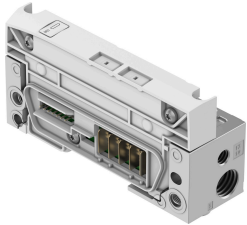


# Pneumatic interface VMPA-AP-EPL-G

Part number: 8137156

FESTO



## Data sheet

Feature	Value
Width	34.1 mm
Length	107.3 mm
Vibration resistance	Transport application test with severity level 2 as per FN 942017-4 and EN 60068-2-6
Note on vibration resistance	SG2 on wall mounting
Shock resistance	Shock test with severity level 2 as per FN 942017-5 and EN 60068-2-27
Note on shock resistance	SG2 on wall mounting
Valve manifold interface	Type 32, MPA-FB-AP-VI
Reverse polarity protection	yes
Note on reverse polarity protection	Self-protection
Mounting position	Arbitrary, on H-rail: horizontal
Diagnostics via LED	Diagnostics per module
Diagnose per internal communication	Communication error Electronics/sensors overvoltage Electronics/sensors undervoltage
Integrated function	Flat plate silencer Ducted exhaust air
Pilot air supply port	Internal
Module code (hex/dec)	0x3052/12370d
Internal cycle time	1 ms
Dimensions W x L x H	34.1 mm x 107.3 mm x 55.1 mm
Fuse protection (short circuit)	Additional safety fuse
Intrinsic current consumption at nominal operating voltage for electronics/sensors	Typically 35 mA
Note regarding operating voltage	SELV/PELV fixed power supplies required Note voltage drop
Nominal operating voltage DC for electronics/sensors	24 V
Nominal operating voltage DC load	24 V
Power failure buffering	10 ms
Potential separation between the supply voltages electronics/sensor technology and load/valves	yes
Contamination level	2
Permissible voltage fluctuations for electronics/sensors	± 25 %

Feature	Value
Permissible voltage fluctuations load	± 25 %
Corrosion resistance class (CRC)	1 - Low corrosion stress
LABS (PWIS) conformity	VDMA24364-B2-L
Storage temperature	-20 °C...70 °C
Relative air humidity	5 - 95 % Non-condensing
Degree of protection	IP65 IP67
Note on degree of protection	In mounted state
Protection class	III
Overvoltage category	II
Ambient temperature	-20 °C...50 °C
Note on ambient temperature	Observe ambient temperature derating according to IEC 61131-2:2017
Nominal altitude of use above sea level	≤ 2000 m ASL (≥ 79.5 kPa)
Max. installation height	3500 m
Information on max. installation height	> 2000 m ASL (< 79.5 kPa) Observe ambient temperature derating according to IEC 61131-2:2017
Product weight	207 g
Electrical actuation	AP interface
Communication interface, protocol	AP
Type of mounting	With through-hole for M4 screw
Pilot air port 12/14	M7
Pneumatic connection 1	G1/4
Note on materials	RoHS-compliant
Cover material	PBT-reinforced
Seals material	PU foam
Housing material	Die-cast aluminum
Material of screws	Steel, galvanized