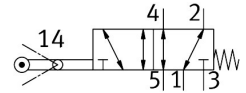


Swivel lever valve VMEF-VL-M52-M-G18

Part number: 8048977

FESTO



Data sheet

| Feature | Value |
|---|--|
| Valve function | 5/2, monostable |
| Actuation type | Mechanical |
| Width | 20 mm |
| Standard nominal flow rate | 750 l/min |
| Pneumatic working port | G1/8 |
| Operating pressure | -0.095 MPa...1 MPa -0.95 bar...10 bar |
| Structural design | Piston gate valve Quarter turn actuator |
| Reset method | Mechanical spring |
| Nominal width | 5.2 mm |
| Sealing principle | Soft |
| Mounting position | Any |
| Type of control | Direct |
| Flow direction | Reversible |
| Lap | Overlap |
| Max. actuating speed with lateral actuation | 1 m/s |
| Max. switching frequency | 2.5 Hz |
| Cam angle | 45 deg |
| Operating medium | Compressed air as per ISO 8573-1:2010 [7::-] |
| Information on operating and pilot media | Operation with oil lubrication possible (required for further use) |
| Corrosion resistance class (CRC) | 1 - Low corrosion stress |
| LABS (PWIS) conformity | VDMA24364-B1/B2-L |
| Temperature of medium | -10 °C...60 °C |
| Ambient temperature | -10 °C...60 °C |
| Note on ambient temperature | Influence of heat on wear |
| Actuating torque | 1.2 Nm |
| Product weight | 207 g |
| Type of mounting | With through-hole |
| Pneumatic connection 1 | G1/8 |
| Pneumatic connection 2 | G1/8 |
| Pneumatic connection 3 | G1/8 |

| Feature | Value |
|------------------------|----------------------------------|
| Pneumatic connection 4 | G1/8 |
| Pneumatic connection 5 | G1/8 |
| Note on materials | RoHS-compliant |
| Cover material | PA-reinforced |
| Seals material | NBR |
| Housing material | Wrought aluminum alloy, anodized |