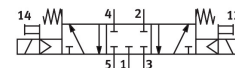


# Solenoid valve VSVA-B-P53C-H-D2-F8-1B2

Part number: 8033809

**FESTO**



## Data sheet

| Feature  | Value                                    |
|--|--|
| Valve function   | 5/3, closed                              |
| Actuation type   | Electrical                               |
| Width  | 52 mm                                    |
| Nominal flow rate standardized according to ISO 8778                   | 3700 l/min                               |
| Pneumatic working port   | Sub-base, size 2 according to ISO 5599-1 |
| Operating voltage  | 24V DC                                   |
| Operating pressure   | 0.3 MPa...1.6 MPa<br>3 bar...16 bar      |
| Structural design  | Piston gate valve                        |
| Reset method   | Mechanical spring                        |
| Degree of protection   | IP65<br>NEMA 4                           |
| Nominal width  | 11.5 mm                                  |
| Width dimension  | 53 mm                                    |
| Exhaust air function   | Via individual sub-base                  |
| Sealing principle  | Soft                                     |
| Mounting position  | Any                                      |
| Conforms to standard   | ISO 5599-1                               |
| Manual override  | Non-detenting                            |
| Type of control  | Pilot-controlled                         |
| Pilot air supply port  | Internal                                 |
| Flow direction   | Non-reversible                           |
| Lap  | Overlap                                  |
| Pilot pressure MPa   | 0.3 MPa...1 MPa                          |
| Pilot pressure   | 3 bar...10 bar                           |
| Suitability for vacuum   | no                                       |
| b-value  | 0.26                                     |
| C value  | 7.696 l/sbar                             |
| Flow rate of pneumatic valve   | 3500 l/min                               |
| Flow rate of pneumatic valve on individual sub-base                    | 2800 l/min                               |
| Optimized flow rate of pneumatic valve pneumatically concatenated flow | 1300 l/min                               |
| Max. switching frequency   | 5 Hz                                     |

| Feature                                   | Value  |
|---|--|
| Switching time off                        | 78 ms  |
| On switching time                         | 25 ms  |
| Changeover time                           | 40 ms  |
| Duty cycle                                | 100%   |
| Coil characteristics                      | 24 V DC: 3.3 W   |
| Permissible voltage fluctuations          | +/- 10 %   |
| Operating medium                          | Compressed air as per ISO 8573-1:2010 [7:4:4]                      |
| Information on operating and pilot media  | Operation with oil lubrication possible (required for further use) |
| LABS (PWIS) conformity                    | VDMA24364-B1/B2-L  |
| Temperature of medium                     | -10 °C...50 °C   |
| Relative air humidity                     | 0 - 90 %   |
| Noise level                               | 85 dB(A)   |
| Pilot medium                              | Compressed air as per ISO 8573-1:2010 [7:4:4]                      |
| Ambient temperature                       | -10 °C...50 °C   |
| Max. tightening torque for valve mounting | 2 Nm   |
| Product weight                            | 777 g  |
| Electrical connection                     | Form B   |
| Type of mounting                          | On sub-base  |
| Pilot air port 12                         | Sub-base, size 2 as per ISO 5599-1                                 |
| Pilot air port 14                         | Sub-base, size 2 as per ISO 5599-1                                 |
| Pneumatic connection 1                    | Sub-base, size 2 as per ISO 5599-1                                 |
| Pneumatic connection 2                    | Sub-base, size 2 as per ISO 5599-1                                 |
| Pneumatic connection 3                    | Sub-base, size 2 as per ISO 5599-1                                 |
| Pneumatic connection 4                    | Sub-base, size 2 as per ISO 5599-1                                 |
| Pneumatic connection 5                    | Sub-base, size 2 as per ISO 5599-1                                 |
| Pilot interface                           | as per ISO 15218   |
| Note on materials                         | RoHS-compliant   |
| Seals material                            | NBR  |
| Housing material                          | Die-cast aluminum  |
| Material of screws                        | Steel  |