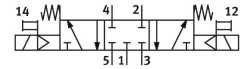


# Solenoid valve VSVA-B-P53C-H-D1-F8-1A1

Part number: 8033735

**FESTO**



## Data sheet

| Feature   | Value                                    |
|---|--|
| Valve function  | 5/3, closed                              |
| Actuation type  | Electrical                               |
| Width   | 42 mm                                    |
| Nominal flow rate standardized according to ISO 8778                    | 1800 l/min                               |
| Pneumatic working port  | Sub-base, size 1 according to ISO 5599-1 |
| Operating voltage   | 24V DC                                   |
| Operating pressure  | 0.3 MPa...1.6 MPa<br>3 bar...16 bar      |
| Structural design   | Piston gate valve                        |
| Reset method  | Mechanical spring                        |
| Degree of protection  | IP65<br>NEMA 4                           |
| Nominal width   | 8 mm                                     |
| Width dimension   | 43 mm                                    |
| Exhaust air function  | Via individual sub-base                  |
| Sealing principle   | Soft                                     |
| Mounting position   | Any                                      |
| Conforms to standard  | ISO 5599-1                               |
| Manual override   | Non-detenting                            |
| Type of control   | Pilot-controlled                         |
| Pilot air supply port   | Internal                                 |
| Flow direction  | Non-reversible                           |
| Lap   | Overlap                                  |
| Pilot pressure MPa  | 0.3 MPa...1 MPa                          |
| Pilot pressure  | 3 bar...10 bar                           |
| Suitability for vacuum  | no                                       |
| b-value   | 0.14                                     |
| C value   | 7.482 l/sbar                             |
| Flow rate of pneumatic valve  | 1600 l/min                               |
| Flow rate of pneumatic valve on individual sub-base                     | 1400 l/min                               |
| Optimized flow rate of pneumatic valve, pneumatically concatenated flow | 1500 l/min                               |

| Feature  | Value  |
|--|--|
| Optimized flow rate of pneumatic valve pneumatically concatenated flow | 1300 l/min   |
| Max. switching frequency   | 5 Hz   |
| Switching time off   | 55 ms  |
| On switching time  | 18 ms  |
| Changeover time  | 32 ms  |
| Duty cycle   | 100%   |
| Coil characteristics   | 24 V DC: 2.6 W   |
| Permissible voltage fluctuations                                       | +/- 10 %   |
| Operating medium   | Compressed air as per ISO 8573-1:2010 [7:4:4]                      |
| Information on operating and pilot media                               | Operation with oil lubrication possible (required for further use) |
| LABS (PWIS) conformity   | VDMA24364-B1/B2-L  |
| Temperature of medium  | -10 °C...50 °C   |
| Relative air humidity  | 0 - 90 %   |
| Noise level  | 85 dB(A)   |
| Pilot medium   | Compressed air as per ISO 8573-1:2010 [7:4:4]                      |
| Ambient temperature  | -10 °C...50 °C   |
| Max. tightening torque for valve mounting                              | 1 Nm   |
| Product weight   | 488 g  |
| Electrical connection  | Form A<br>as per EN 175301-803                                     |
| Type of mounting   | On sub-base  |
| Pilot air port 12  | Sub-base, size 1 as per ISO 5599-1                                 |
| Pilot air port 14  | Sub-base, size 1 as per ISO 5599-1                                 |
| Pneumatic connection 1   | Sub-base, size 1 as per ISO 5599-1                                 |
| Pneumatic connection 2   | Sub-base, size 1 as per ISO 5599-1                                 |
| Pneumatic connection 3   | Sub-base, size 1 as per ISO 5599-1                                 |
| Pneumatic connection 4   | Sub-base, size 1 as per ISO 5599-1                                 |
| Pneumatic connection 5   | Sub-base, size 1 as per ISO 5599-1                                 |
| Pilot interface  | as per ISO 15218   |
| Note on materials  | RoHS-compliant   |
| Seals material   | NBR  |
| Housing material   | Die-cast aluminum  |
| Material of screws   | Steel  |