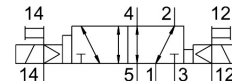
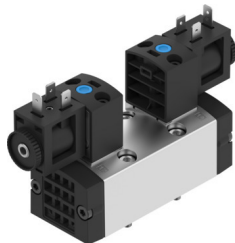


# Solenoid valve VSVA-B-D52-ZH-D1-F8-1B2

Part number: 8033722

**FESTO**



## Data sheet

| Feature   | Value                                    |
|---|--|
| Valve function  | 5/2, bistable, dominant                  |
| Actuation type  | Electrical                               |
| Width   | 42 mm                                    |
| Nominal flow rate standardized according to ISO 8778                    | 1800 l/min                               |
| Pneumatic working port  | Sub-base, size 1 according to ISO 5599-1 |
| Operating voltage   | 24V DC                                   |
| Operating pressure  | -0.09 MPa...1.6 MPa<br>-0.9 bar...16 bar |
| Structural design   | Piston gate valve                        |
| Degree of protection  | IP65<br>NEMA 4                           |
| Nominal width   | 8 mm                                     |
| Width dimension   | 43 mm                                    |
| Exhaust air function  | Via individual sub-base                  |
| Sealing principle   | Soft                                     |
| Mounting position   | Any                                      |
| Conforms to standard  | ISO 5599-1                               |
| Manual override   | Non-detenting                            |
| Type of control   | Pilot-controlled                         |
| Pilot air supply port   | External                                 |
| Flow direction  | Reversible                               |
| Lap   | Overlap                                  |
| Pilot pressure MPa  | 0.3 MPa...1 MPa                          |
| Pilot pressure  | 3 bar...10 bar                           |
| Suitability for vacuum  | yes                                      |
| b-value   | 1.5                                      |
| C value   | 7.663 l/sbar                             |
| Flow rate of pneumatic valve  | 1700 l/min                               |
| Flow rate of pneumatic valve on individual sub-base                     | 1400 l/min                               |
| Optimized flow rate of pneumatic valve, pneumatically concatenated flow | 1600 l/min                               |
| Optimized flow rate of pneumatic valve pneumatically concatenated flow  | 1400 l/min                               |

| Feature                                   | Value  |
|---|--|
| Max. switching frequency                  | 5 Hz   |
| Changeover time                           | 16 ms  |
| Duty cycle                                | 100%   |
| Coil characteristics                      | 24 V DC: 3.3 W   |
| Permissible voltage fluctuations          | +/- 10 %   |
| Operating medium                          | Compressed air as per ISO 8573-1:2010 [7:4:4]                      |
| Information on operating and pilot media  | Operation with oil lubrication possible (required for further use) |
| LABS (PWIS) conformity                    | VDMA24364-B1/B2-L  |
| Temperature of medium                     | -10 °C...50 °C   |
| Relative air humidity                     | 0 - 90 %   |
| Noise level                               | 85 dB(A)   |
| Pilot medium                              | Compressed air as per ISO 8573-1:2010 [7:4:4]                      |
| Ambient temperature                       | -10 °C...50 °C   |
| Max. tightening torque for valve mounting | 1 Nm   |
| Product weight                            | 447 g  |
| Electrical connection                     | Form B   |
| Type of mounting                          | On sub-base  |
| Pilot air port 12                         | Sub-base, size 1 as per ISO 5599-1                                 |
| Pilot air port 14                         | Sub-base, size 1 as per ISO 5599-1                                 |
| Pneumatic connection 1                    | Sub-base, size 1 as per ISO 5599-1                                 |
| Pneumatic connection 2                    | Sub-base, size 1 as per ISO 5599-1                                 |
| Pneumatic connection 3                    | Sub-base, size 1 as per ISO 5599-1                                 |
| Pneumatic connection 4                    | Sub-base, size 1 as per ISO 5599-1                                 |
| Pneumatic connection 5                    | Sub-base, size 1 as per ISO 5599-1                                 |
| Pilot interface                           | as per ISO 15218   |
| Note on materials                         | RoHS-compliant   |
| Seals material                            | NBR  |
| Housing material                          | Die-cast aluminum  |
| Material of screws                        | Steel  |