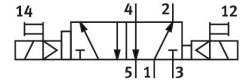
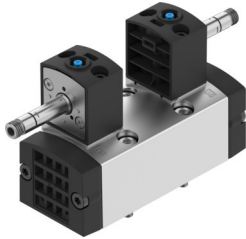


Solenoid valve VSVA-B-D52-T-D1-F8

Part number: 8033658

FESTO



Data sheet

Feature	Value
Valve function	5/2, bistable, dominant
Actuation type	Electrical
Width	42 mm
Nominal flow rate standardized according to ISO 8778	1800 l/min
Pneumatic working port	Sub-base, size 1 according to ISO 5599-1
Operating pressure	0.3 MPa...1.6 MPa 3 bar...16 bar
Structural design	Piston gate valve
Degree of protection	IP65 NEMA 4
Nominal width	8 mm
Width dimension	43 mm
Exhaust air function	Via individual sub-base
Sealing principle	Soft
Mounting position	Any
Conforms to standard	ISO 5599-1
Manual override	Detenting via accessory
Type of control	Pilot-controlled
Pilot air supply port	Internal
Flow direction	Non-reversible
Lap	Overlap
Pilot pressure MPa	0.3 MPa...1 MPa
Pilot pressure	3 bar...10 bar
Suitability for vacuum	no
b-value	1.5
C value	7.663 l/sbar
Flow rate of pneumatic valve	1700 l/min
Flow rate of pneumatic valve on individual sub-base	1400 l/min
Optimized flow rate of pneumatic valve, pneumatically concatenated flow	1600 l/min
Optimized flow rate of pneumatic valve pneumatically concatenated flow	1400 l/min
Max. switching frequency	5 Hz

Feature	Value
Changeover time	16 ms
Duty cycle	100%
Operating medium	Compressed air as per ISO 8573-1:2010 [7:4:4]
Information on operating and pilot media	Operation with oil lubrication possible (required for further use)
LABS (PWIS) conformity	VDMA24364-B1/B2-L
Temperature of medium	-10 °C...50 °C
Relative air humidity	0 - 90 %
Noise level	85 dB(A)
Pilot medium	Compressed air as per ISO 8573-1:2010 [7:4:4]
Ambient temperature	-10 °C...50 °C
Max. tightening torque for valve mounting	1 Nm
Product weight	390 g
Type of mounting	On sub-base
Pilot air port 12	Sub-base, size 1 as per ISO 5599-1
Pilot air port 14	Sub-base, size 1 as per ISO 5599-1
Pneumatic connection 1	Sub-base, size 1 as per ISO 5599-1
Pneumatic connection 2	Sub-base, size 1 as per ISO 5599-1
Pneumatic connection 3	Sub-base, size 1 as per ISO 5599-1
Pneumatic connection 4	Sub-base, size 1 as per ISO 5599-1
Pneumatic connection 5	Sub-base, size 1 as per ISO 5599-1
Pilot interface	as per ISO 15218
Note on materials	RoHS-compliant
Seals material	NBR
Housing material	Die-cast aluminum
Material of screws	Steel