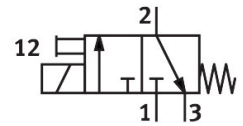
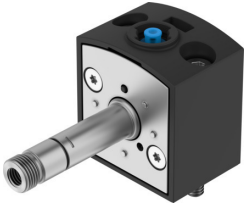


Solenoid valve VSCS-B-M32C-MT-WB-F8

Part number: 8028541

FESTO



Data sheet

| Feature | Value |
|--|--|
| Valve function | 3/2, closed, monostable |
| Actuation type | Electrical |
| Width | 30 mm |
| Standard nominal flow rate | 34 l/min |
| Pneumatic working port | Sub-base, size 30 mm as per ISO 15218 |
| Operating pressure | 0.2 MPa...1 MPa 2 bar...10 bar 29 psi...145 psi |
| Structural design | Sub base valve |
| Reset method | Mechanical spring |
| Degree of protection | IP65 |
| Sealing principle | Soft |
| Mounting position | Any |
| Conforms to standard | ISO 15218 |
| Manual override | Detenting via accessory Non-detenting |
| Type of control | Direct |
| Flow direction | Non-reversible |
| Lap | Underlap |
| Note on forced dynamization | Switching frequency at least once a week |
| Max. switching frequency | 5 Hz |
| Switching time off | 8 ms |
| On switching time | 8 ms |
| Duty cycle | 100% |
| Max. positive test pulse with 0 signal | 3 ms |
| Max. negative test pulse on 1 signal | 3.4 ms |
| Operating medium | Compressed air as per ISO 8573-1:2010 [7:4:4] |
| Information on operating and pilot media | Operation with oil lubrication possible (required for further use) |
| Vibration resistance | Transport application test with severity level 2 as per FN 942017-4 and EN 60068-2-6 |
| Shock resistance | Shock test with severity level 2 as per FN 942017-5 and EN 60068-2-27 |
| Corrosion resistance class (CRC) | 1 - Low corrosion stress |

| Feature | Value |
|------------------------|-------------------|
| LABS (PWIS) conformity | VDMA24364-B1/B2-L |
| Temperature of medium | -10 °C...50 °C |
| Ambient temperature | -10 °C...50 °C |
| Type of mounting | CNOMO |
| Note on materials | RoHS-compliant |
| Seals material | NBR |