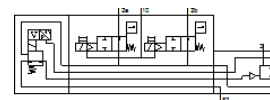


Electrical pressure regulator PREL-186-HP3-V1-V-40CFX2-1

Part number: 1709209

FESTO



Data sheet

| Feature | Value |
|---|--|
| Size | 186 |
| Nominal diameter DN | 45 |
| Series | L |
| Assembly position | Vertical |
| Type of actuation | electrical |
| Design structure | Electrically adjustable pressure regulator |
| Controller function | Output pressure constant with initial pressure compensation with secondary exhaust |
| Safety function | Exhausting the control chamber |
| Performance level (PL) | Exhausting the control chamber/category 3, Performance Level d |
| Working pressure | 0 ... 50 bar |
| Pressure regulation range | 0.4 ... 40 bar |
| Max. pressure hysteresis | 0.1 bar |
| Nominal operating voltage DC | 24 V |
| Signal range, analog output | 0 - 10 V |
| Signal range, analog input | 0 - 10 V |
| SETPOINT/ACTUAL values | Voltage type 0 - 10 V |
| Operating medium | Compressed air in accordance with ISO8573-1:2010 [7:4:4] Inert gases |
| CE symbol (see declaration of conformity) | according to EU printing device guideline according to EU machines guideline |
| Corrosion resistance classification CRC | 2 - Moderate corrosion stress |
| Storage temperature | -10 ... 60 °C |
| Food-safe | See Supplementary material information |
| Medium temperature | 5 ... 50 °C |
| Ambient temperature | 5 ... 50 °C |
| Authorization | SE Type Test Certification |
| Electrical connection IN | Plug, M12, 5-pin, A-coded |
| Electrical connection OUT | Plug, M12, 5-pin, A-coded |
| Mounting type | Optional on service unit with accessories |
| Pneumatic connection, port 1 | G1 |
| Pneumatic connection, 11 | G1/4 |
| Pneumatic connection, port 2 | G1 |
| Pneumatic port 22 | G1/4 |
| Pneumatic connection, port 3 | G1 |
| Pneumatic port 82 | G1/2 |
| Materials note | Contains PWIS substances Conforms to RoHS |
| Material underneath cover | Aluminum Anodized |
| Material spring | Spring steel |
| Material housing | Aluminum Anodized |