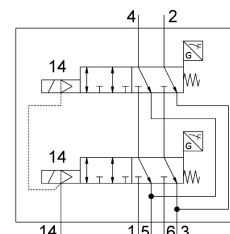


# Control block VOFT-L14-T62-MZT2-G18-1M8RL-2APC

Part number: 8219317

**FESTO**



## Data sheet

Feature	Value
Valve function	6/2-way valve, monostable, two-channel
Type of actuation	Electric
Construction width	29 mm
Nominal flow rate standardised according to ISO 8778	400 l/min
Standard nominal flow rate (standardised to DIN 1343)	360 l/min
pneumatic working port	G1/8
Operating voltage	24V DC
Operating pressure	0 MPa...1 MPa 0 bar...10 bar 0 psi...145 psi
Design	Piston gate valve
Type of reset	Mechanical spring
Degree of protection	IP65
CE mark (see declaration of conformity)	To EU EMC Directive In accordance with EU RoHS Directive
UKCA marking (see declaration of conformity)	To UK instructions for EMC To UK RoHS instructions
Exhaust-air function	Without flow control option
Sealing principle	Soft
Mounting position	optional
Conforms to standard	EN 60947-5-2
Manual override	Non-detenting
Type of piloting	Pilot actuated
Pilot air supply	External
Flow direction	Non-reversible
Measuring principle	Inductive
lap	Underlap
Reverse polarity protection	For all electrical connections
Reverse polarity protection sensor	For all electrical connections
Note on forced dynamization	Current information on this topic can be found in Technical Report V
Switching position indicator	LED

Feature	Value
Signal status display	Yellow LED, valve control
Switching position sensing	Normal position via sensor
Switching status display sensor	LED
Pilot pressure	0.35 MPa...0.8 MPa 3.5 bar...8 bar
b value	0.45
C value	1.5 l/sbar
Switching time off	65 ms
Switching time on	14 ms
Valve - sensor switching time on	11 ms
Valve - sensor switching time off	70 ms
Operational voltage range DC	24 V
Duty cycle	100%
Max. positive test pulse with 0 signal	800 µs
Max. negative test pulse with 1 signal	400 µs
Nominal operating voltage DC	24 V
Permissible voltage fluctuations	-10%
Operating medium	Compressed air to ISO 8573-1:2010 [7:4:4]
Note on operating and pilot medium	Lubricated operation not possible
Vibration resistance	Transport application test with severity level 2 to FN 942017-4 and EN 60068-2-6
Shock resistance	Shock test with severity level 2 to FN 942017-5 and EN 60068-2-27
Corrosion resistance class CRC	2 - Moderate corrosion stress
LABS (PWIS) conformity	VDMA24364 zone III
Cleanroom suitability, measured according to ISO 14644-14	Class 5 according to ISO 14644-1
Storage temperature	-10 °C...60 °C
Media temperature	-5 °C...50 °C
Sound pressure level	64 dB(A)
Protection against direct and indirect contact	PELV
Pilot medium	Compressed air to ISO 8573-1:2010 [7:4:4]
Ambient temperature	-5 °C...50 °C
Nominal altitude of use	1000 m in accordance with VDE 0580
Product weight	280 g
Operating voltage range, DC sensor	10 V...30 V
Short-circuit strength sensor	Yes
Idle current sensor	10 mA
Max. output current sensor	200 mA
Max. switching frequency sensor	5000 Hz
Residual ripple sensor	± 10%
Voltage drop sensor	2 V
Electrical connection	2x plug connector 3-pin M8x1 A-encoded to EN 61076-2-104
Sensor connection	Cable 3-pin 2.5 m
Type of mounting	Via through-hole for M4 screw
Pilot air port 14	M5
Pneumatic connection, port 1	G1/8
Pneumatic connection, port 2	G1/8
Pneumatic connection, port 3	G1/8
Pneumatic connection, port 4	G1/8
Pneumatic connection, port 5	G1/8
Pneumatic connection 6	G1/8

Feature	Value
Note on materials	RoHS-compliant
Material seals	FPM HNBR NBR
Material housing	Wrought aluminium alloy
Material cable sheath	PVC
Material screws	Steel, chemically nickel-plated
Switching element function	N/C contact