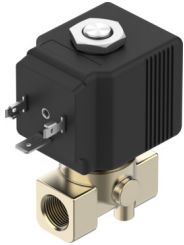


Solenoid valve

VZWD-B-L-M22C-M-G14-15-V-36-2A-A1-80

Part number: 8214633

FESTO



Data sheet

Feature	Value
Design	Directly actuated poppet valve
Type of actuation	Electric
Sealing principle	Soft
Mounting position	optional
Type of mounting	In-line installation
Connection Process valve	G1/4
Electrical connection	Type A Plugs To EN 175301-803 Square design
Nominal size	1.5 mm
Valve function	2/2-way, closed, monostable
Manual override	None
Flow direction	Non-reversible
Medium	Compressed air to ISO 8573-1:2010 [7:4:4] Inert gases Mineral oil Water Neutral fluids Other media on request
Pressure difference	0 MPa 0 bar 0 psi
Characteristic coil data	110 V AC: 50/60 Hz, pick-up power 40.0 VA, holding power 30.0 VA
Insulation material class	H
Permissible voltage fluctuations	+15% / -10%
Duty cycle	100%
Type of reset	Mechanical spring
Type of piloting	Direct

Feature	Value
Medium pressure	0 MPa...8 MPa 0 bar...80 bar 0 psi...1160 psi
Max. viscosity	25 mm ² /s
Media temperature	-10 °C...140 °C
Ambient temperature	-10 °C...80 °C
Flow rate Kv	0.07 m ³ /h
Switching time on	8 ms
Switching time off	25 ms
Note on materials	RoHS-compliant
Material housing	Brass
Material number housing	CW617N
Material seals	FPM
Product weight	380 g
CE mark (see declaration of conformity)	To EU EMC Directive To EU Low Voltage Directive In accordance with EU RoHS Directive
UKCA marking (see declaration of conformity)	To UK instructions for EMC To UK RoHS instructions To UK regulations for electrical equipment
Degree of protection	IP65
Corrosion resistance class CRC	1 - Low corrosion stress