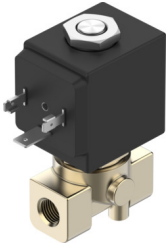


# Solenoid valve

## VZWD-B-L-M22C-M-N18-30-V-30-3A-A1-15

Part number: 8214592

**FESTO**



### Data sheet

| Feature                          | Value  |
|----------------------------------|--|
| Design                           | Directly actuated poppet valve   |
| Type of actuation                | Electric   |
| Sealing principle                | Soft   |
| Mounting position                | optional   |
| Type of mounting                 | In-line installation   |
| Connection Process valve         | 1/8 NPT  |
| Electrical connection            | Type A<br>Plugs<br>To EN 175301-803<br>Square design   |
| Nominal size                     | 3 mm   |
| Valve function                   | 2/2-way, closed, monostable  |
| Manual override                  | None   |
| Flow direction                   | Non-reversible   |
| Medium                           | Compressed air to ISO 8573-1:2010 [7:4:4]<br>Inert gases<br>Mineral oil<br>Water<br>Neutral fluids<br>Other media on request |
| Pressure difference              | 0 MPa<br>0 bar<br>0 psi  |
| Characteristic coil data         | 220/230 V AC: 50/60 Hz, pick-up power 20.0 VA, holding power 15.0 VA   |
| Insulation material class        | F  |
| Permissible voltage fluctuations | +15% / -10%  |
| Duty cycle                       | 100%   |
| Type of reset                    | Mechanical spring  |

| Feature                                      | Value   |
|--|---|
| Type of piloting                             | Direct  |
| Medium pressure                              | 0 MPa...1.5 MPa<br>0 bar...15 bar<br>0 psi...217.5 psi  |
| Max. viscosity                               | 25 mm <sup>2</sup> /s   |
| Media temperature                            | -10 °C...140 °C   |
| Ambient temperature                          | -10 °C...80 °C  |
| Flow rate Kv                                 | 0.25 m <sup>3</sup> /h  |
| Switching time on                            | 8 ms  |
| Switching time off                           | 25 ms   |
| Note on materials                            | RoHS-compliant  |
| Material housing                             | Brass   |
| Material number housing                      | CW617N  |
| Material seals                               | FPM   |
| Product weight                               | 300 g   |
| CE mark (see declaration of conformity)      | To EU EMC Directive<br>To EU Low Voltage Directive<br>In accordance with EU RoHS Directive          |
| UKCA marking (see declaration of conformity) | To UK instructions for EMC<br>To UK RoHS instructions<br>To UK regulations for electrical equipment |
| Degree of protection                         | IP65  |
| Corrosion resistance class CRC               | 1 - Low corrosion stress  |