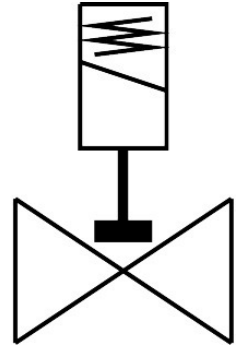
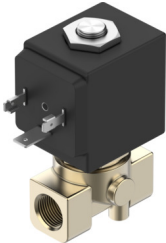


Solenoid valve

VZWD-B-L-M22C-M-G14-25-V-30-2A-A1-16

Part number: 8214431

FESTO



Data sheet

| Feature | Value |
|----------------------------------|--|
| Design | Directly actuated poppet valve |
| Type of actuation | Electric |
| Sealing principle | Soft |
| Mounting position | optional |
| Type of mounting | In-line installation |
| Connection Process valve | G1/4 |
| Electrical connection | Type A Plugs To EN 175301-803 Square design |
| Nominal size | 2.5 mm |
| Valve function | 2/2-way, closed, monostable |
| Manual override | None |
| Flow direction | Non-reversible |
| Medium | Compressed air to ISO 8573-1:2010 [7:4:4] Inert gases Mineral oil Water Neutral fluids Other media on request |
| Pressure difference | 0 MPa 0 bar 0 psi |
| Characteristic coil data | 110 V AC: 50/60 Hz, pick-up power 20.0 VA, holding power 15.0 VA |
| Insulation material class | F |
| Permissible voltage fluctuations | +15% / -10% |
| Duty cycle | 100% |
| Type of reset | Mechanical spring |
| Type of piloting | Direct |

| Feature | Value |
|--|---|
| Medium pressure | 0 MPa...1.6 MPa 0 bar...16 bar 0 psi...232 psi |
| Max. viscosity | 25 mm ² /s |
| Media temperature | -10 °C...140 °C |
| Ambient temperature | -10 °C...80 °C |
| Flow rate Kv | 0.15 m ³ /h |
| Switching time on | 8 ms |
| Switching time off | 25 ms |
| Note on materials | RoHS-compliant |
| Material housing | Brass |
| Material number housing | CW617N |
| Material seals | FPM |
| Product weight | 300 g |
| CE mark (see declaration of conformity) | To EU EMC Directive To EU Low Voltage Directive In accordance with EU RoHS Directive |
| UKCA marking (see declaration of conformity) | To UK instructions for EMC To UK RoHS instructions To UK regulations for electrical equipment |
| Degree of protection | IP65 |
| Corrosion resistance class CRC | 1 - Low corrosion stress |