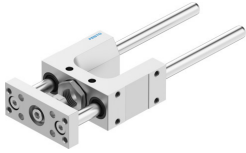


Guide unit FEN-12/16-80-GF

Part number: 8204042

FESTO



Data sheet

| Feature | Value |
|--------------------------|--|
| Size | 12/16 |
| Stroke | 80 mm |
| Mounting position | optional |
| Guide | Plain-bearing guide |
| Design | Guidance |
| Explosion protection | The information in the certificate must be observed! |
| LABS (PWIS) conformity | VDMA24364-B2-L |
| Ambient temperature | -20 °C...80 °C |
| Displacement force | 15 N |
| Moving mass | 257 g |
| Product weight | 586 g |
| Type of mounting | Via female thread |
| Note on materials | RoHS-compliant |
| Material guide component | High-alloy steel |
| Material housing | Anodised wrought aluminium alloy |
| Material yoke plate | Anodised wrought aluminium alloy |