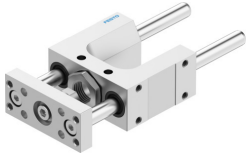


Guide unit FEN-12/16-40-GF

Part number: 8204041

FESTO



Data sheet

Feature	Value
Size	12/16
Stroke	40 mm
Mounting position	optional
Guide	Plain-bearing guide
Design	Guidance
Explosion protection	The information in the certificate must be observed!
LABS (PWIS) conformity	VDMA24364-B2-L
Ambient temperature	-20 °C...80 °C
Displacement force	15 N
Moving mass	209 g
Product weight	538 g
Type of mounting	Via female thread
Note on materials	RoHS-compliant
Material guide component	High-alloy steel
Material housing	Anodised wrought aluminium alloy
Material yoke plate	Anodised wrought aluminium alloy