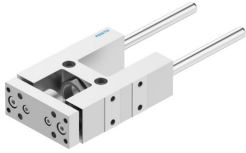


Guide unit FEN-25-80-KF

Part number: 8204035

FESTO



Data sheet

Feature	Value
Size	25
Stroke	80 mm
Mounting position	optional
Guide	Recirculating ball bearing guide
Design	Guidance
Explosion protection	The information in the certificate must be observed!
LABS (PWIS) conformity	VDMA24364-B2-L
Ambient temperature	-20 °C...80 °C
Max. force Fy	520 N
Max. force Fy static	830 N
Max. force Fz	520 N
Max. force Fz static	830 N
Max. moment Mx	15 Nm
Max. torque Mx static	24 Nm
Max. moment My	20 Nm
Max. torque My static	31 Nm
Max. moment Mz	20 Nm
Max. torque Mz static	31 Nm
Displacement force	15 N
Moving mass	365 g
Product weight	909 g
Type of mounting	Via female thread
Note on materials	RoHS-compliant
Material guide component	Tempered steel
Material housing	Anodised wrought aluminium alloy
Material yoke plate	Anodised wrought aluminium alloy