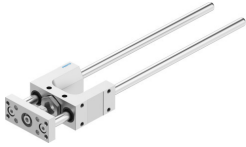


Guide unit FEN-12/16-200-KF

Part number: 8204030

FESTO



Data sheet

Feature	Value
Size	12/16
Stroke	200 mm
Mounting position	optional
Guide	Recirculating ball bearing guide
Design	Guidance
Explosion protection	The information in the certificate must be observed!
LABS (PWIS) conformity	VDMA24364-B2-L
Ambient temperature	-20 °C...80 °C
Max. force Fy	520 N
Max. force Fy static	830 N
Max. force Fz	520 N
Max. force Fz static	830 N
Max. moment Mx	12 Nm
Max. torque Mx static	20 Nm
Max. moment My	7 Nm
Max. torque My static	12 Nm
Max. moment Mz	7 Nm
Max. torque Mz static	12 Nm
Displacement force	15 N
Moving mass	401 g
Product weight	669 g
Type of mounting	Via female thread
Note on materials	RoHS-compliant
Material guide component	Tempered steel
Material housing	Anodised wrought aluminium alloy
Material yoke plate	Anodised wrought aluminium alloy