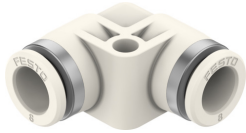


Push-in L-connector NPQO-L-Q8-E-P10

Part number: 8203323

FESTO



Data sheet

Feature	Value
Nominal size	7 mm
Tubing insertion depth	17.6 mm
Mounting position	optional
Design	L-shape Push-pull principle
Size of pack	10
Variants	With mounting holes
Operating pressure complete temperature range	-0.09 MPa...0.3 MPa -0.9 bar...3 bar -13.05 psi...43.5 psi
Temperature-dependent operating pressure	-0.09 MPa...1.6 MPa -0.9 bar...16 bar -13.05 psi...232 psi
Operating medium	Compressed air to ISO 8573-1:2010 [7:4:4] Inert gases Carbon dioxide Air Oxygen Nitrogen
Corrosion resistance class CRC	2 - Moderate corrosion stress
LABS (PWIS) conformity	VDMA24364 zone III
Suitable for use with food	See supplementary material information
Media temperature	0 °C...120 °C
Ambient temperature	0 °C...60 °C 32 °F...140 °F
Biocompatibility according to standard	ISO 18562
Oxygen suitability according to standard	ASTM G 93 ISO 15001
Maximum impurity level for hydrocarbons	550 MGM
Product weight	10.91 g
Pneumatic connection, port 1	For tubing outer diameter of 8 mm
Pneumatic connection, port 2	For tubing outside diameter of 8 mm
Colour of release ring	White
Note on materials	RoHS-compliant
Material housing	PVDF

Feature	Value
Material release ring	PVDF
Material o-ring	FPM
Material tubing seal	FPM
Material tubing clamp component	High-alloy stainless steel
Thrust ring material	PVDF