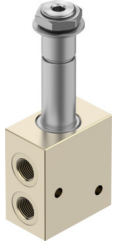


# Valve

## VOFD-L50T-M32-MN-G14-10-R16-F10

FESTO

Part number: 8201899



## Data sheet

Feature	Value
Valve function	3/2-way, closed, monostable
Type of actuation	Electric
Construction width	51 mm
Standard nominal flow rate (standardised to DIN 1343)	493 l/min
pneumatic working port	G1/4
Operating pressure	0 MPa...1 MPa 0 bar...10 bar 0 psi...145 psi
Design	Directly actuated poppet valve
Type of reset	Mechanical spring
Degree of protection	IP65
Certificate issuing authority	TÜV 968/V 1251.00/21
Nominal size	5 mm
Sealing principle	Soft
Mounting position	optional
Manual override	None
Type of piloting	Direct
Flow direction	Reversible
Safety function	Safe venting
Safety Integrity Level (SIL)	Up to SIL 3 High Demand mode To SIL 3 Low Demand mode
Suitability for vacuum	yes
b value	0.25
C value	2 l/sbar
Flow rate Kv pressurisation	0.36 m <sup>3</sup> /h
Flow rate Kv exhaust	0.36 m <sup>3</sup> /h
Standard nominal flow rate 2-3	429 l/min
Switching time off	60 ms
Switching time on	40 ms
Explosion protection	Zone 1 (ATEX) Zone 2 (ATEX) Zone 21 (ATEX) Zone 22 (ATEX)

Feature	Value
Operating medium	Compressed air to ISO 8573-1:2010 [7:2:2]
Extended ambient temperature	-25 ... 60° C Low demand mode
Corrosion resistance class CRC	1 - Low corrosion stress
LABS (PWIS) conformity	VDMA24364 zone III
Media temperature	-25 °C...60 °C
Ambient temperature	-25 °C...60 °C
Product weight	750 g
Pneumatic connection, port 1	G1/4
Pneumatic connection, port 2	G1/4
Pneumatic connection, port 3	G1/4
Note on materials	RoHS-compliant
Material seals	NBR
Material housing	Brass