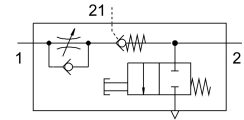


One-way flow control valve VFOF-CE-BAH-Q6-Q6

Part number: 8193267

FESTO



Data sheet

Feature	Value
Valve function	Exhaust air one-way flow control function
Selection of additional functions	Actuated non-return valve
Pneumatic connection, port 1	QS-6
Pneumatic connection, port 2	QS-6
Type of actuation	Manual
Pilot air port 21	QS-6
Standard nominal flow rate in flow control direction	240 l/min
Standard nominal flow rate in blocked direction	400 l/min...460 l/min
Operating pressure	1 MPa 10 bar 145 psi
Pilot pressure	0.2 MPa...1 MPa 2 bar...10 bar 29 psi...145 psi
Ambient temperature	-10 °C...60 °C
Material housing	PBT
Explosion protection	Zone 2 (ATEX) Zone 22 (ATEX)
Mounting position	optional
Type act., cont. n.-r. func.	Pneumatic
Manual exhaust function	Non-detenting
Operating pressure complete temperature range	0.2 bar...10 bar
Standard flow rate in flow control direction 0.6->0 MPa (6->0 bar, 87->0 psi)	420 l/min
Standard flow rate in non-return direction 0.6->0 MPa (6->0 bar, 87->0 psi) actuated	400 l/min...460 l/min
Standard flow rate in non-return direction 0.6->0 MPa (6->0 bar, 87->0 psi) non-actuated	400 l/min...460 l/min
Standard nominal flow rate in non-return direction actuated	150 l/min...230 l/min
Standard nominal flow rate in non-return direction non-actuated	120 l/min...220 l/min
Switching time off	9 ms
Switching time on	6 ms
Operating medium	Compressed air to ISO 8573-1:2010 [7:4:4]
Note on operating and pilot medium	Lubricated operation possible

Feature	Value
LABS (PWIS) conformity	VDMA24364-B1/B2-L
Storage temperature	-20 °C...70 °C
Media temperature	-10 °C...60 °C
Pilot medium	Compressed air to ISO 8573-1:2010 [7:4:4]
Permissible actuation moment, regulating screw	1 Nm
Product weight	24.6 g
Material covering	ES-BE
Note on materials	RoHS-compliant
Material cover	PBT
Material seals	NBR
Material sleeve	Wrought aluminium alloy
Material release ring	POM
Material adjusting screw	Brass