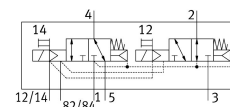
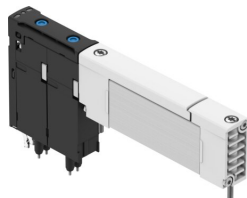


# Solenoid valve

## VUVX-BK10-T32H-MZH-F-1T1L

Part number: 8187065

**FESTO**



## Data sheet

Feature	Value
Valve function	2x3/2-way, open/closed, monostable
Type of actuation	Electric
Valve size	10 mm
Nominal flow rate standardised according to ISO 8778	555 l/min
Operating voltage	24V DC
Operating pressure	0 MPa...0.7 MPa 0 bar...7 bar
Design	Piston slide with sealing ring
Type of reset	Mechanical spring
Degree of protection	IP65
Width	10.35 mm
Nominal size	3.6 mm
Exhaust-air function	With flow control option
Sealing principle	Soft
Mounting position	optional
Manual override	Non-detenting
Type of piloting	Pilot actuated
Pilot air supply	External
Flow direction	Reversible
lap	Underlap
Signal status display	yes
Pilot pressure	0.2 MPa...0.7 MPa 2 bar...7 bar
Suitability for vacuum	no
b value	0.34
C value	2.02 l/sbar
Nominal flow rate standardised to ISO 8778 exhaust 2-3	545 l/min
Max. switching frequency	3 Hz
Switching time off	17 ms
Switching time on	14 ms
Duty cycle	100%
Max. positive test pulse with 0 signal	1400 µs

Feature	Value
Max. negative test pulse with 1 signal	800 µs
Characteristic coil data	24 V DC: 0.35 W
Permissible voltage fluctuations	+/- 10 %
Operating medium	Compressed air to ISO 8573-1:2010 [7:4:4] Inert gases
Note on operating and pilot medium	Ester oil < 0.1mg/m <sup>3</sup> , according to ISO 8573-1:2010 [:-:2] Lubricated operation possible (in which case lubricated operation will always be required)
Vibration resistance	Transport application test with severity level 2 to FN 942017-4 and EN 60068-2-6
Shock resistance	Shock test with severity level 1 to FN 942017-5 and EN 60068-2-27
Corrosion resistance class CRC	1 - Low corrosion stress
LABS (PWIS) conformity	VDMA24364 zone III
Storage temperature	-20 °C...70 °C
Suitable for use with food	NSF H1
Media temperature	-5 °C...50 °C
Relative air humidity	5 - 95%
Pilot medium	Compressed air to ISO 8573-1:2010 [7:4:4] Inert gases
Ambient temperature	-5 °C...50 °C
Max. tightening torque for valve mounting	0.375 Nm
Product weight	52.6 g
Electrical connection	Plug-in
Type of mounting	On sub-base
Pilot air port 12/14	Sub-base
Pilot exhaust port 82/84	Sub-base
Pilot air port 12	Sub-base
Pneumatic connection, port 1	Sub-base
Pneumatic connection, port 2	Sub-base
Pneumatic connection, port 3	Sub-base
Pneumatic connection, port 4	Sub-base
Pneumatic connection, port 5	Sub-base
Pneumatic port 82	Sub-base
Note on materials	RoHS-compliant
Material seals	HNBR
Material dynamic seals	HNBR
Material housing	Anodised wrought aluminium alloy
Material spring	High-alloy stainless steel
Material piston slide	POM
Material screws	Stainless steel