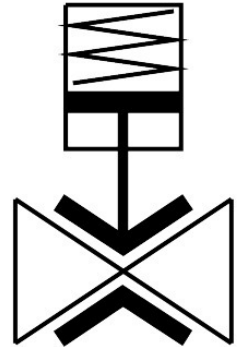
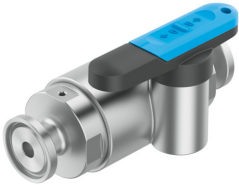


# Pinch valve

## VZQH-2H-6-S5S5-V4V4S1PM-2

Part number: 8187049

FESTO



## Data sheet

Feature	Value
Design	Pinch valve
Type of actuation	Manual
Sealing principle	Soft
Mounting position	optional
Type of mounting	In-line installation
Connection Process valve	Clamp to DIN 32676 series A
Nominal size DN	6
Valve function	2/2-way, closed, monostable
Flow direction	Reversible
Medium pressure	0 MPa...0.2 MPa 0 bar...2 bar 0 psi...29 psi
Nominal pressure PN	10
Burst pressure	1.6 MPa 16 bar 232 psi
Type of reset	Mechanical spring
Type of piloting	Direct
Medium	Compressed air to ISO 8573-1:2010 [-:::1] Water
Max. viscosity	4000 mm <sup>2</sup> /s
Media temperature	-5 °C...100 °C
Ambient temperature	-5 °C...60 °C
Storage temperature	5 °C...30 °C
Flow rate Kv	0.7 m <sup>3</sup> /h
Switching time on	1000 ms
Switching time off	1000 ms
Note on materials	RoHS-compliant

<b>Feature</b>	<b>Value</b>
LABS (PWIS) conformity	VDMA24364 zone III
Material housing	High-alloy stainless steel
Material number housing	1.4408
Material housing cover	High-alloy stainless steel
Material number housing cover	1.4404 / AISI 316L
Material seals	FPM HNBR
Material shut-off element	VMQ (silicone)
Product weight	427 g
Suitable for use with food	See supplementary material information See declaration of conformity