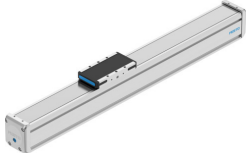


Guide axis ELFD-KF-60- -

Part number: 8182487

FESTO



Data sheet

| Feature | Value |
|---|---|
| Size | 60 |
| Stroke reserve | 4.5 mm |
| Mounting position | optional |
| Guide | Recirculating ball bearing guide |
| Design | Guidance |
| Max. acceleration | 50 m/s ² |
| Max. speed | 3 m/s |
| Duty cycle | 100% |
| Corrosion resistance class CRC | 0 - No corrosion stress |
| LABS (PWIS) conformity | VDMA24364 zone III |
| Suitability for the production of Li-ion batteries | Metals with more than 1% by mass of copper, zinc or nickel are excluded from use. The exceptions are nickel in steel, chemically nickel-plated surfaces, circuit boards, cables, electrical plug connectors and coils |
| Degree of protection | IP30 |
| Ambient temperature | 0 °C...60 °C |
| 2nd moment of area Iy | 485200 mm ⁴ |
| 2nd moment of area Iz | 730600 mm ⁴ |
| Max. force Fy | 2200 N...4400 N |
| Max. force Fz | 2200 N...4400 N |
| Max. moment Mx | 38 Nm...75 Nm |
| Max. moment My | 42 Nm...390 Nm |
| Max. moment Mz | 15 Nm...140 Nm |
| Max. force Fy total axis | 1513 N...3026 N |
| Max. force Fz total axis | 2200 N...3200 N |
| Max. moment Mx total axis | 38 Nm...75 Nm |
| Max. moment My total axis | 15 Nm...128 Nm |
| Max. moment Mz total axis | 15 Nm...133 Nm |
| Torsional mass moment of inertia It | 192900 mm ⁴ |
| Displacement force | 6 N |
| Reference service life | 5000 km |
| Fy at theoretical life value of 100 km (only guide consideration) | 9208 N...18415 N |
| Fz at theoretical life value of 100 km (only guide consideration) | 9208 N...18415 N |

| Feature | Value |
|---|-------------------------------------|
| Mx at theoretical life value of 100 km (only guide consideration) | 157 Nm...314 Nm |
| My at theoretical life value of 100 km (only guide consideration) | 60 Nm...500 Nm |
| Mz at theoretical life value of 100 km (only guide consideration) | 60 Nm...500 Nm |
| Moving mass | 419 g...643 g |
| Basic weight for 0 mm stroke | 1261 g...1683 g |
| Additional weight per 10 mm stroke | 49 g |
| Material end cap | Aluminium gravity die-cast, painted |
| Material profile | Anodised wrought aluminium alloy |
| Note on materials | RoHS-compliant |
| Material cover tape | High-alloy stainless steel |
| Material cover | Aluminium gravity die-cast, painted |
| Material guide slide | Steel |
| Material guide rail | Steel |
| Material slide | Wrought aluminium alloy |