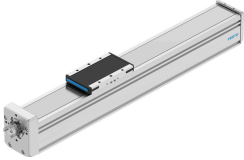


Spindle axis ELGD-BS-KF-80- -

Part number: 8176875

FESTO



Data sheet

Feature	Value
Working stroke	100 mm...2000 mm
Size	80
Stroke reserve	0 mm
Reversing backlash theoretical	0,15 mm
Spindle diameter	16 mm
Spindle pitch	5 mm/U...20 mm/U
Mounting position	optional
Guide	Recirculating ball bearing guide
Design	Electromechanical linear axis With ball screw
Type of motor	Stepper motor Servo motor
Spindle type	Ball screw drive
Position detection	Via inductive sensors
Max. acceleration	15 m/s ²
Max. rotational speed	5000 rpm
Max. speed	0.42 m/s...1.67 m/s
Repetition accuracy	±0.01 mm
Duty cycle	100%
LABS (PWIS) conformity	VDMA24364 zone III
Degree of protection	IP30
Ambient temperature	0 °C...60 °C
Impact energy in end positions	2 mJ
Note on the impact energy in the end positions	At maximum homing speed of 0.01 m/s
2nd moment of area Iy	1213000 mm ⁴
2nd moment of area Iz	2052000 mm ⁴
Idle torque at v _{max}	0.172 Nm...0.218 Nm
Idle torque at v _{min}	0.065 Nm...0.075 Nm
Max. force F _y	3906 N...8236 N
Max. force F _z	3913 N...8256 N
Max. force F _y total axis	2291 N...4581 N
Max. force F _z total axis	2500 N...4000 N

Feature	Value
Fy at theoretical life value of 100 km (only guide consideration)	17576 N...35153 N
Fz at theoretical life value of 100 km (only guide consideration)	17576 N...35153 N
Max. moment Mx	95 Nm...180 Nm
Max. moment My	42 Nm...390 Nm
Max. moment Mz	42 Nm...390 Nm
Max. moment Mx total axis	95 Nm...160 Nm
Max. moment My total axis	42 Nm...335 Nm
Max. moment Mz total axis	42 Nm...275 Nm
Mx at theoretical life value of 100 km (only guide consideration)	422 Nm...844 Nm
My at theoretical life value of 100 km (only guide consideration)	162 Nm...1356 Nm
Mz at theoretical life value of 100 km (only guide consideration)	162 Nm...1356 Nm
Distance between slide surface and guide centre	62 mm
Max. radial force at drive shaft	500 N
Max. feed force Fx	2650 N
Torsional mass moment of inertia It	405000 mm ⁴
Mass moment of inertia JH per metre of stroke	0.39016 kgcm ²
Mass moment of inertia JL per kg of working load	0.00633 kgcm ² ...0.02533 kgcm ²
Mass moment of inertia JO	0.10619 kgcm ² ...0.13622 kgcm ²
Feed constant	5 mm/U...20 mm/U
Reference service life	5000 km
Maintenance interval	Life-time lubrication
Moving mass	990 g...1671 g
Basic weight for 0 mm stroke	3147 g...4533 g
Additional weight per 10 mm stroke	90 g
Dynamic deflection (moving load)	0.05% of the axis length, max. 0.5 mm
Static deflection (load in standstill)	0.1% of the axis length
Interface code, actuator	T46
Material end cap	Aluminium gravity die-cast, painted
Material profile	Anodised wrought aluminium alloy
Note on materials	RoHS-compliant
Material cover tape	High-alloy stainless steel
Material drive cover	Aluminium gravity die-cast, painted
Material guide slide	Steel
Material guide rail	Steel
Material slide	Wrought aluminium alloy
Material spindle nut	Steel
Material spindle	Steel