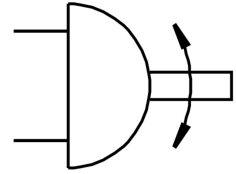
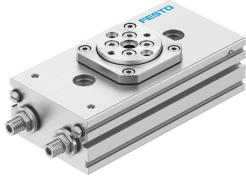


Semi-rotary drive DRRS-12-180-FH-PA

Part number: 8163607

FESTO



Data sheet

Feature	Value
Size	12
Cushioning angle	23.5 deg
Setting range of swivel angle on both sides	+10/-100 deg
Axial eccentricity poppet valve	0.05 mm
Swivel angle	180 deg
Min. swivel angle	45 deg
Max. swivel angle	200 deg
Cushioning	Elastic cushioning rings/plates at both ends
Mounting position	optional
Design	Rack and pinion
Position detection	Via proximity switch
Operating pressure	0.3 MPa...0.8 MPa 3 bar...8 bar
Repetition accuracy	0.05 deg
Mode of operation	Double-acting
Operating medium	Compressed air to ISO 8573-1:2010 [7:4:4]
Note on operating and pilot medium	Lubricated operation possible (in which case lubricated operation will always be required)
Corrosion resistance class CRC	1 - Low corrosion stress
LABS (PWIS) conformity	VDMA24364-C1-L
Suitability for the production of Li-ion batteries	Metals with more than 1% copper, zinc or nickel by mass are excluded from use. Exceptions are nickel in steel, chemically nickel-plated surfaces, printed circuit boards, cables, electrical plug connectors and coils
Cleanroom class	Class 9 according to ISO 14644-1
Storage temperature	-20 °C...60 °C
Ambient temperature	0 °C...60 °C
Theoretical torque at 0.6 MPa (6 bar, 87 psi)	0.9 Nm
Permissible mass moment of inertia	0.005 kgm ²
Max. bending moment	2 Nm
Max. axial load static	80 N
Product weight	310 g

Feature	Value
Type of mounting	Either: Via mounting kit With through-hole Via female thread
Pneumatic connection	M3
Note on materials	RoHS-compliant
Material seals	NBR TPE-U(PU)
Material housing	Anodised aluminium
Flange shaft material	Aluminium-Knetlegierung
Pinion material	Vergütungsstahl