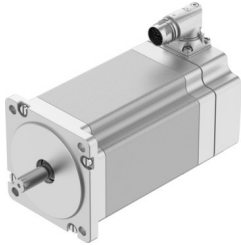


# Stepper motor EMMT-ST-87-L-RM

Part number: 8156199

FESTO



## Data sheet

Feature	Value
Ambient temperature	-15 °C...40 °C
Note on ambient temperature	Up to 80°C with derating -2%/°C
Max. installation height	4000 m
Note on max. installation height	As of 1,000 m: only with derating of -1.0% per 100 m
Storage temperature	-20 °C...70 °C
Relative air humidity	0 - 90%
Conforms to standard	IEC 60034
Temperature class as per EN 60034-1	B
Max. winding temperature	130 °C
Rating class as per EN 60034-1	S1
Temperature monitoring	Dig. motor temp. via BiSS-C
Motor type to EN 60034-7	IM B5 IM V1 IM V3
Mounting position	optional
Degree of protection	IP40
Note on degree of protection	IP40 for motor shaft without rotary shaft seal IP65 for motor housing, incl. connection technology
Interface code, motor out	87A
Electrical connection 1, connection type	Hybrid plug
Electrical connection 1, connector system	M17x0.75
Electrical connection 1, number of connections/cores	12
Note on materials	RoHS-compliant
Corrosion resistance class CRC	0 - No corrosion stress
LABS (PWIS) conformity	VDMA24364 zone III
Vibration resistance	Transport application test with severity level 2 to FN 942017-4 and EN 60068-2-6
Shock resistance	Shock test with severity level 2 to FN 942017-5 and EN 60068-2-27
Approval	RCM trademark c UL us - Recognized (OL)

Feature	Value
CE mark (see declaration of conformity)	To EU EMC Directive In accordance with EU RoHS Directive
CE marking (see declaration of conformity)	To UK instructions for EMC To UK RoHS instructions
Certificate issuing authority	UL E342973
Nominal operating voltage DC	48 V
Number of pole pairs	50
Motor holding torque	9.4 Nm
Nominal torque	8.4 Nm
Peak torque	9.4 Nm
Nominal rotary speed	140 rpm
Max. rotational speed	430 rpm
Max. mechanical speed	7000 rpm
Stepper angle for complete step	1.8 deg
Stepping angle tolerance	±5%
Nominal power rating of motor	126 W
Continuous stall current	10 A
Nominal motor current	8.4 A
Peak current	10 A
Motor constant	1.06 Nm/A
Voltage constant, phase	78.9 mV/min
Phase winding resistance	0.3 Ohm
Phase winding inductance	2.7 mH
Winding longitudinal inductivity Ld (phase)	4.1 mH
Winding cross inductivity Lq (phase)	2.7 mH
Electric time constant	9 ms
Thermal time constant	37 min
Thermal resistance	0.75 K/W
Measuring flange	250 x 250 x 15 mm, steel
Total mass moment of inertia of output	3.006 kgcm <sup>2</sup>
Product weight	4660 g
Permissible axial shaft load	60 N
Permissible radial shaft load	220 N
Rotor position sensor	Absolute multi-turn encoder
rotor position sensor, manufacturer designation	KCD-BC33B-1617-U09C-JAQ-009
rotor position sensor, absolute detectable revolutions	16384
Rotor position encoder interface	BiSS-C
Rotor position sensor, encoder measuring principle	Magnetic
rotor position sensor, DC operating voltage	14 V
rotor position sensor, DC operating voltage range	4.75 V...15 V
Rotor pos. enc., sin/cosin p/r	2
rotor position sensor, position values per revolution	131072
Rotor position transducer resolution	17 bit
rotor position sensor, system accuracy of angle measurement	-360 arcsec...360 arcsec
Mean time to failure (MTTF), subcomponent	20 years, rotor position encoder