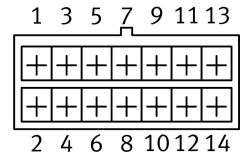
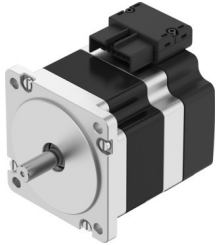


Stepper motor EMMB-ST-87-S-S

Part number: 8156149

FESTO



Data sheet

Feature	Value
Ambient temperature	-15 °C...40 °C
Note on ambient temperature	Up to 80°C with derating -2%/°C
Max. installation height	4000 m
Note on max. installation height	As of 1,000 m: only with derating of -1.0% per 100 m
Storage temperature	-20 °C...70 °C
Relative air humidity	0 - 90%
Conforms to standard	IEC 60034
Temperature class as per EN 60034-1	B
Max. winding temperature	130 °C
Rating class as per EN 60034-1	S1
Motor type to EN 60034-7	IM B5 IM V1 IM V3
Mounting position	optional
Degree of protection	IP20
Note on degree of protection	IP40 for motor shaft without rotary shaft seal
Interface code, motor out	87A
Electrical connection 1, connection type	Hybrid plug
Electrical connection 1, connector system	Plug pattern L10
Electrical connection 1, number of connections/cores	14
Note on materials	RoHS-compliant
Corrosion resistance class CRC	0 - No corrosion stress
LABS (PWIS) conformity	VDMA24364 zone III
Vibration resistance	Transport application test with severity level 2 to FN 942017-4 and EN 60068-2-6
Shock resistance	Shock test with severity level 2 to FN 942017-5 and EN 60068-2-27
Approval	RCM trademark
CE mark (see declaration of conformity)	To EU EMC Directive In accordance with EU RoHS Directive
CE marking (see declaration of conformity)	To UK instructions for EMC To UK RoHS instructions
Nominal operating voltage DC	48 V
Number of pole pairs	50

Feature	Value
Motor holding torque	2.4 Nm
Peak torque	2.7 Nm
Max. rotational speed	2200 rpm
Max. mechanical speed	8000 rpm
Stepper angle for complete step	1.8 deg
Stepping angle tolerance	±5%
Continuous stall current	9.5 A
Nominal motor current	6.9 A
Peak current	12 A
Motor constant	0.24 Nm/A
Voltage constant, phase	15.4 mV/min
Phase winding resistance	0.13 Ohm
Phase winding inductance	0.35 mH
Winding longitudinal inductivity Ld (phase)	0.56 mH
Winding cross inductivity Lq (phase)	0.35 mH
Electric time constant	1.75 ms
Thermal time constant	37 min
Thermal resistance	0.91 K/W
Measuring flange	250 x 250 x 15 mm, steel
Total mass moment of inertia of output	1 kgcm ²
Product weight	1890 g
Permissible axial shaft load	60 N
Permissible radial shaft load	220 N