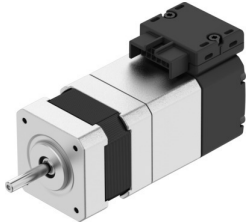


# Stepper motor EMMB-ST-42-S-SB

Part number: 8156128

FESTO



## Data sheet

Feature	Value
Ambient temperature	0 °C...40 °C
Note on ambient temperature	Up to 80°C with derating -2%/°C
Max. installation height	4000 m
Note on max. installation height	As of 1,000 m: only with derating of -1.0% per 100 m
Storage temperature	-20 °C...70 °C
Relative air humidity	0 - 90%
Conforms to standard	IEC 60034
Temperature class as per EN 60034-1	B
Max. winding temperature	130 °C
Rating class as per EN 60034-1	S1
Motor type to EN 60034-7	IM B5 IM V1 IM V3
Mounting position	optional
Degree of protection	IP20
Note on degree of protection	IP40 for motor shaft without rotary shaft seal
Interface code, motor out	42A
Electrical connection 1, connection type	Hybrid plug
Electrical connection 1, connector system	Connection pattern L5
Electrical connection 1, number of connections/cores	14
Note on materials	RoHS-compliant
Corrosion resistance class CRC	0 - No corrosion stress
LABS (PWIS) conformity	VDMA24364 zone III
Vibration resistance	Transport application test with severity level 2 to FN 942017-4 and EN 60068-2-6
Shock resistance	Shock test with severity level 2 to FN 942017-5 and EN 60068-2-27
Approval	RCM trademark
CE mark (see declaration of conformity)	To EU EMC Directive In accordance with EU RoHS Directive
CE marking (see declaration of conformity)	To UK instructions for EMC To UK RoHS instructions
Nominal operating voltage DC	48 V
Number of pole pairs	50

Feature	Value
Motor holding torque	0.25 Nm
Peak torque	0.25 Nm
Max. rotational speed	2700 rpm
Max. mechanical speed	9000 rpm
Stepper angle for complete step	1.8 deg
Stepping angle tolerance	±5%
Continuous stall current	2 A
Nominal motor current	1.8 A
Peak current	2 A
Motor constant	0.133 Nm/A
Voltage constant, phase	12.1 mV/min
Phase winding resistance	2.1 Ohm
Phase winding inductance	3 mH
Winding longitudinal inductivity Ld (phase)	1.6 mH
Winding cross inductivity Lq (phase)	3 mH
Electric time constant	1.4 ms
Thermal time constant	22 min
Thermal resistance	3.5 K/W
Measuring flange	200 x 200 x 15 mm, steel
Total mass moment of inertia of output	0.041 kgcm <sup>2</sup>
Product weight	520 g
Permissible axial shaft load	10 N
Permissible radial shaft load	28 N
Brake holding torque	0.63 Nm
Operating voltage DC for brake	24 V
Brake current consumption	0.34 A
Power consumption, brake	8.2 W
Brake coil resistance	70.9 Ohm
Brake coil inductivity	146 mH
Brake separation time	28 ms
Brake closing time	41 ms
DC brake response delay	8 ms
Max. brake no-load speed	9000 rpm
Max. friction per braking process	1500 J
Mass moment of inertia of brake	0.006 kgcm <sup>2</sup>
Switching cycles holding brake	10 million idle actuations (without friction work!)