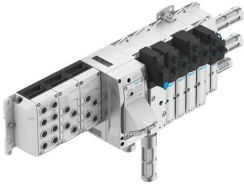


Valve terminal VTSA-F-CB-AP

Part number: 8130722

FESTO



Data sheet

Feature	Value
Electrical control	AP interface Fieldbus
Type of mounting	Direct mounting via through-hole On H-rail via accessories On mounting frame Screw-clamped With through-hole for M5 screw with accessories With through-hole for M6 screw with accessories Via through-hole for M5 screw Via through-hole for M6 screw
Mounting position	Any, on H-rail: horizontal
Operating medium	Compressed air to ISO 8573-1:2010 [7:4:4]
Pilot medium	Compressed air to ISO 8573-1:2010 [7:4:4]
Ambient temperature	-5 °C...50 °C
Note on ambient temperature	Observe derating according to user documentation Observe ambient temperature derating according to IEC 61131-2:2017
Storage temperature	-20 °C...60 °C
Relative air humidity	5 - 90% Non-condensing
Max. installation height	3500 m
Note on max. installation height	> 2000 m ASL (< 79.5 kPa) Observe derating according to user documentation Observe ambient temperature derating according to IEC 61131-2:2017
Degree of protection	IP65
Corrosion resistance class CRC	0 - No corrosion stress
Operating pressure	-0.9 bar...10 bar
Pilot pressure	3 bar...10 bar
LABS (PWIS) conformity	VDMA24364-B1/B2-L
CE mark (see declaration of conformity)	To EU EMC Directive In accordance with EU RoHS Directive
Approval	RCM trademark c UL us - Recognized (OL)
Note on materials	RoHS-compliant Free of halogen Free of phosphoric acid ester
Valve terminal structure	Modular, valve sizes can be mixed

Feature	Value
Manual override	Detenting Detenting via accessory Non-detenting Covered Self-resetting via electrical control signal
Type of actuation	Electric
Valve function	2x2/2-way, monostable, closed 2x3/2-way, monostable, closed 2x3/2-way, open, monostable 2x3/2-way, open/closed, monostable 5/2 bistable 5/2-way, bistable, dominant 5/2-way, monostable 5/2-way, monostable, safety function 5/3-way, pressurised 5/3 exhausted 5/3 closed 5/3-way, port 2 pressurised, 4 exhausted
Design	Piston gate valve
Pilot air supply	External Internal
Suitability for vacuum	yes
Exhaust-air function	Via throttle plate
Signal status display	LED
Field bus, protocol	ACD (Address Conflict Detection) DLR (Device Level Ring) EtherCAT® EtherCAT CoE EtherCAT Distributed Clocks (DC) EtherCAT EoE EtherCAT FoE EtherCAT Modular Device Profile (MDP) EtherNet/IP EtherNet/IP QoS EtherNet/IP Quickconnect LLDP MRP, MRPD (ring redundancy) Modbus/TCP (Modbus/UDP) PROFINET FSU PROFINET I&MO .. 3 PROFINET IRT
Field bus, connection type	2x socket
Field bus, connection system	M12x1, D-coded to EN 61076-2-101 RJ45 to IEC 61076-3-117 (V14) SCRJ to IEC 61754-24-21
Field bus, connection pattern	2 ...8
Note on inputs	EP: 488 bytes Modbus: 4096 bytes
Power supply, function	Incoming electronics/sensors and load and functional earth Incoming electronics/sensors and load
Power supply, connection type	Plugs
power supply, connection system	7/8" to NFPA/T3.5.29 M12x1, L-coded to EN 61076-2-111 M18x1 M8x1, A-coded to EN 61076-2-104 Push-pull to IEC 61076-3-126
Power supply, number of pins/wires	4 ...5
Nominal operating voltage DC	24 V
Note on nominal operating voltage DC	Protected Extra-Low-Voltage to IEC 60204-1
Permissible voltage fluctuations	+/- 10 %
Nominal DC operating voltage, electronics/sensors	24 V
Permissible voltage fluctuations for electronics/sensors	± 25%
Potential separation between the supply voltages electronics/sensor technology and load/valves	Yes

Feature	Value
Reverse polarity protection	yes