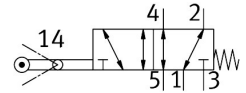


# Swivel lever valve VMEF-VL-M52-M-N18

Part number: 8048989

FESTO



## Data sheet

| Feature   | Value  |
|---|--|
| Valve function  | 5/2-way, monostable  |
| Type of actuation                                     | Mechanical   |
| Construction width                                    | 20 mm  |
| Standard nominal flow rate (standardised to DIN 1343) | 750 l/min  |
| pneumatic working port                                | 1/8 NPT  |
| Operating pressure                                    | -0.095 MPa...1 MPa<br>-0.95 bar...10 bar   |
| Design  | Piston gate valve<br>Semi-rotary drive   |
| Type of reset   | Mechanical spring  |
| Nominal size  | 5.2 mm   |
| Sealing principle                                     | Soft   |
| Mounting position                                     | optional   |
| Type of piloting                                      | Direct   |
| Flow direction  | Reversible   |
| lap   | Overlap  |
| Max. actuating speed with lateral actuation           | 1 m/s  |
| Max. switching frequency                              | 2.5 Hz   |
| Cam angle   | 45 deg   |
| Operating medium                                      | Compressed air to ISO 8573-1:2010 [7:-:-]  |
| Note on operating and pilot medium                    | Lubricated operation possible (in which case lubricated operation will always be required) |
| Corrosion resistance class CRC                        | 1 - Low corrosion stress   |
| LABS (PWIS) conformity                                | VDMA24364-B1/B2-L  |
| Media temperature                                     | -10 °C...60 °C   |
| Ambient temperature                                   | -10 °C...60 °C   |
| Note on ambient temperature                           | Influence of heat on wear  |
| Actuating torque                                      | 1.2 Nm   |
| Product weight  | 207 g  |
| Type of mounting                                      | With through-hole  |
| Pneumatic connection, port 1                          | 1/8 NPT  |
| Pneumatic connection, port 2                          | 1/8 NPT  |

| <b>Feature</b>               | <b>Value</b>                     |
|------------------------------|----------------------------------|
| Pneumatic connection, port 3 | 1/8 NPT                          |
| Pneumatic connection, port 4 | 1/8 NPT                          |
| Pneumatic connection, port 5 | 1/8 NPT                          |
| Note on materials            | RoHS-compliant                   |
| Material cover               | PA-reinforced                    |
| Material seals               | NBR                              |
| Material housing             | Anodised wrought aluminium alloy |