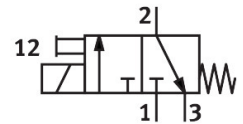
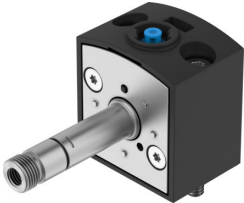


Solenoid valve VSCS-B-M32C-MT-WB-F8

Part number: 8028541

FESTO



Data sheet

Feature	Value
Valve function	3/2-way, closed, monostable
Type of actuation	Electric
Construction width	30 mm
Standard nominal flow rate (standardised to DIN 1343)	34 l/min
pneumatic working port	Sub-base size 30 mm to ISO 15218
Operating pressure	0.2 MPa...1 MPa 2 bar...10 bar 29 psi...145 psi
Design	Sub-base valve
Type of reset	Mechanical spring
Degree of protection	IP65
Sealing principle	Soft
Mounting position	optional
Conforms to standard	ISO 15218
Manual override	Detenting via accessory Non-detenting
Type of piloting	Direct
Flow direction	Non-reversible
lap	Underlap
Note on forced dynamization	Switching frequency min. 1/week
Max. switching frequency	5 Hz
Switching time off	8 ms
Switching time on	8 ms
Duty cycle	100%
Max. positive test pulse with 0 signal	3 ms
Max. negative test pulse with 1 signal	3.4 ms
Operating medium	Compressed air to ISO 8573-1:2010 [7:4:4]
Note on operating and pilot medium	Lubricated operation possible (in which case lubricated operation will always be required)
Vibration resistance	Transport application test with severity level 2 to FN 942017-4 and EN 60068-2-6
Shock resistance	Shock test with severity level 2 to FN 942017-5 and EN 60068-2-27
Corrosion resistance class CRC	1 - Low corrosion stress

Feature	Value
LABS (PWIS) conformity	VDMA24364-B1/B2-L
Media temperature	-10 °C...50 °C
Ambient temperature	-10 °C...50 °C
Type of mounting	CNOMO
Note on materials	RoHS-compliant
Material seals	NBR